



[Go to Product page](#)

Datasheet for ABIN6744846  
**anti-EIF4A1 antibody (AA 215-264)**

1 Image

### Overview

Quantity:	100 µL
Target:	EIF4A1
Binding Specificity:	AA 215-264
Reactivity:	Human, Rat, Mouse, Cow, Guinea Pig, Horse, Rabbit, Zebrafish (Danio rerio), Monkey, Pig, Xenopus laevis
Host:	Rabbit
Clonality:	Polyclonal
Conjugate:	This EIF4A1 antibody is un-conjugated
Application:	Western Blotting (WB)

### Product Details

Immunogen:	Synthetic peptide located between aa215-264 of human EIF4A1 (P60842, NP_001407). Percent identity by BLAST analysis: Human, Chimpanzee, Gorilla, Orangutan, Gibbon, Monkey, Galago, Marmoset, Mouse, Rat, Elephant, Bovine, Rabbit, Horse, Pig, Opossum, Guinea pig, Platypus, Xenopus, Catfish, Stickleback, Zebrafish (100%), Hamster, Dog, Bat, Turkey, Zebra finch, Chicken, Nematode (92%), Slime mold (91%), Rice, Arabidopsis (84%).  Type of Immunogen: Synthetic peptide
Specificity:	Human EIF4A1
Predicted Reactivity:	Percent identity by BLAST analysis: Human, Mouse, Rat, Rabbit, Horse, Pig, Guinea pig, Xenopus, Zebrafish (100%).

## Product Details

---

Purification: Immunoaffinity purified

## Target Details

---

Target: EIF4A1

Alternative Name: EIF4A1 / EIF4A ([EIF4A1 Products](#))

Background: Name/Gene ID: EIF4A1

Synonyms: EIF4A1, EIF-4A-I, DDX2A, EIF4A, EIF4A-I, EIF-4A

Gene ID: 1973

NCBI Accession: [NP\\_001407](#)

UniProt: [P60842](#)

## Application Details

---

Application Notes: Approved: WB (0.2 - 1 µg/mL)

Usage: Western Blot: Suggested dilution at 1 µg/mL in 5 % skim milk / PBS buffer, and HRP conjugated anti-Rabbit IgG should be diluted in 1: 50,000 - 100,000 as secondary antibody.

Comment: Target Species of Antibody: Human

Restrictions: For Research Use only

## Handling

---

Format: Lyophilized

Reconstitution: Distilled water

Concentration: Lot specific

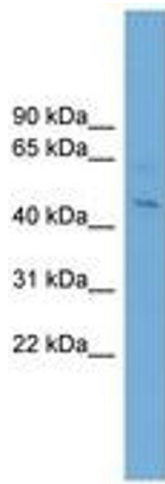
Buffer: Lyophilized from PBS with 2 % sucrose

Handling Advice: Avoid repeat freeze-thaw cycles.

Storage: 4 °C, -20 °C

Storage Comment: Long term: -20°C, the use of 50% glycerol is recommended if storing aliquots in -20°C for long term use (up to 1 year)

Short term (less than 1 week): 4°C. Avoid freeze-thaw cycles.



**Image 1.**