

Datasheet for ABIN6744847  
**anti-FBP2 antibody (C-Term)**[Go to Product page](#)

## 1 Image

## Overview

Quantity:	100 µL
Target:	FBP2
Binding Specificity:	C-Term
Reactivity:	Human, Mouse, Rat, Cow, Monkey
Host:	Rabbit
Clonality:	Polyclonal
Conjugate:	This FBP2 antibody is un-conjugated
Application:	Western Blotting (WB)

## Product Details

Immunogen:	Synthetic peptide from C-Terminus of human FBP2 (O00757, NP_003828). Percent identity by BLAST analysis: Human, Chimpanzee, Gorilla, Gibbon, Monkey, Marmoset, Mouse, Rat, Bovine (100%), Elephant, Dog, Rabbit, Horse, Pig, Guinea pig, Zebra finch (93%), Panda, Bat, Turkey, Chicken, Xenopus (86%), Galago, Sheep, Opossum, Lizard, Catfish (80%).  Type of Immunogen: Synthetic peptide
Specificity:	Human FBP2
Predicted Reactivity:	Percent identity by BLAST analysis: Mouse (100%) Dog, Horse, Pig (93%) Chicken, Xenopus (86%).
Purification:	Immunoaffinity purified

## Target Details

Target:	FBP2
Alternative Name:	FBP2 ( <a href="#">FBP2 Products</a> )
Background:	Name/Gene ID: FBP2  Synonyms: FBP2, FBPase 2, Fructose-1,6-bisphosphatase 2, Hexosediphosphatase, Muscle fructose-bisphosphatase
Gene ID:	8789
NCBI Accession:	<a href="#">NP_003828</a>
UniProt:	<a href="#">O00757</a>

## Application Details

Application Notes:	Approved: WB (0.2 - 1 µg/mL)  Usage: Western Blot: Suggested dilution at 1 µg/mL in 5 % skim milk / PBS buffer, and HRP conjugated anti-Rabbit IgG should be diluted in 1: 50,000 - 100,000 as secondary antibody.
Comment:	Target Species of Antibody: Human
Restrictions:	For Research Use only

## Handling

Format:	Lyophilized
Reconstitution:	Distilled water
Concentration:	Lot specific
Buffer:	Lyophilized from PBS with 2 % sucrose
Handling Advice:	Avoid repeat freeze-thaw cycles.
Storage:	4 °C, -20 °C
Storage Comment:	Long term: -20°C, the use of 50% glycerol is recommended if storing aliquots in -20°C for long term use (up to 1 year)  Short term (less than 1 week): 4°C. Avoid freeze-thaw cycles.

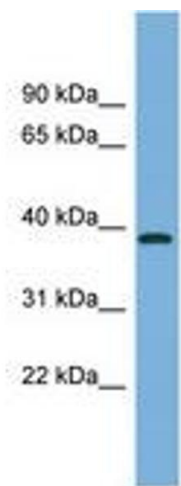


Image 1.