

Datasheet for ABIN6744858
anti-PCDHB15 antibody (AA 35-84)[Go to Product page](#)

1 Image

Overview

Quantity:	100 µL
Target:	PCDHB15
Binding Specificity:	AA 35-84
Reactivity:	Human, Cow, Horse, Pig, Monkey
Host:	Rabbit
Clonality:	Polyclonal
Conjugate:	This PCDHB15 antibody is un-conjugated
Application:	Western Blotting (WB)

Product Details

Immunogen:	Synthetic peptide located between aa35-84 of human PCDHB15 (Q9Y5E8, NP_061758). Percent identity by BLAST analysis: Human, Chimpanzee, Gorilla, Monkey (100%), Gibbon, Dog (92%), Bovine, Horse, Pig (85%). Type of Immunogen: Synthetic peptide
Specificity:	Human PCDHB15
Predicted Reactivity:	Percent identity by BLAST analysis: Dog (92%) Bovine, Horse, Pig (85%).
Purification:	Immunoaffinity purified

Target Details

Target:	PCDHB15
---------	---------

Target Details

Alternative Name:	PCDHB15 (PCDHB15 Products)
Background:	Name/Gene ID: PCDHB15 Family: Cadherin Synonyms: PCDHB15, PCDH-beta-15, Protocadherin beta-15, PCDH-BETA15, Protocadherin beta 15
Gene ID:	56121
NCBI Accession:	NP_061758
UniProt:	Q9Y5E8

Application Details

Application Notes:	Approved: WB (0.2 - 1 µg/mL) Usage: Western Blot: Suggested dilution at 1 µg/mL in 5 % skim milk / PBS buffer, and HRP conjugated anti-Rabbit IgG should be diluted in 1: 50,000 - 100,000 as secondary antibody.
Comment:	Target Species of Antibody: Human
Restrictions:	For Research Use only

Handling

Format:	Lyophilized
Reconstitution:	Distilled water
Concentration:	Lot specific
Buffer:	Lyophilized from PBS with 2 % sucrose
Handling Advice:	Avoid repeat freeze-thaw cycles.
Storage:	4 °C, -20 °C
Storage Comment:	Long term: -20°C, the use of 50% glycerol is recommended if storing aliquots in -20°C for long term use (up to 1 year) Short term (less than 1 week): 4°C. Avoid freeze-thaw cycles.

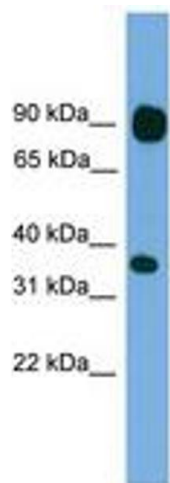


Image 1.