

Datasheet for ABIN6744859
anti-HLA-F antibody (AA 71-120)[Go to Product page](#)

1 Image

Overview

Quantity:	100 µL
Target:	HLA-F (HLAF)
Binding Specificity:	AA 71-120
Reactivity:	Human, Monkey
Host:	Rabbit
Clonality:	Polyclonal
Conjugate:	This HLA-F antibody is un-conjugated
Application:	Western Blotting (WB)

Product Details

Immunogen:	Synthetic peptide located between aa71-120 of human HLA-F (Q5JQI8, NP_001091949). Percent identity by BLAST analysis: Human, Chimpanzee, Monkey (100%). Type of Immunogen: Synthetic peptide
Specificity:	Human HLA-F
Predicted Reactivity:	Percent identity by BLAST analysis: Human (100%).
Purification:	Immunoaffinity purified

Target Details

Target:	HLA-F (HLAF)
Alternative Name:	HLA-F (HLAF Products)

Target Details

Background:	Name/Gene ID: HLA-F Synonyms: HLA-F, CDA12, HLAF, HLA-CDA12, MHC class I antigen F, HLA F antigen, MHC class Ib antigen, HLA-5.4, Leukocyte antigen F
Gene ID:	3134
NCBI Accession:	NP_001091949
UniProt:	P30511
Pathways:	Regulation of Leukocyte Mediated Immunity , Positive Regulation of Immune Effector Process , Human Leukocyte Antigen (HLA) in Adaptive Immune Response

Application Details

Application Notes:	Approved: WB (0.2 - 1 µg/mL) Usage: Western Blot: Suggested dilution at 1 µg/mL in 5 % skim milk / PBS buffer, and HRP conjugated anti-Rabbit IgG should be diluted in 1: 50,000 - 100,000 as secondary antibody.
Comment:	Target Species of Antibody: Human
Restrictions:	For Research Use only

Handling

Format:	Lyophilized
Reconstitution:	Distilled water
Concentration:	Lot specific
Buffer:	Lyophilized from PBS with 2 % sucrose
Handling Advice:	Avoid repeat freeze-thaw cycles.
Storage:	4 °C, -20 °C
Storage Comment:	Long term: -20°C, the use of 50% glycerol is recommended if storing aliquots in -20°C for long term use (up to 1 year) Short term (less than 1 week): 4°C. Avoid freeze-thaw cycles.

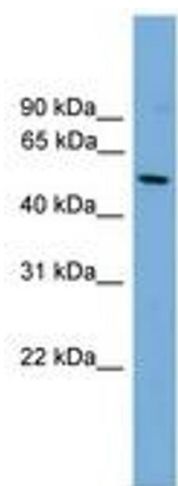


Image 1.