



[Go to Product page](#)

Datasheet for ABIN6744860  
**anti-TREM2 antibody (AA 143-192)**

1 Image

Overview

Quantity:	100 µL
Target:	TREM2
Binding Specificity:	AA 143-192
Reactivity:	Human, Rat, Cow
Host:	Rabbit
Clonality:	Polyclonal
Conjugate:	This TREM2 antibody is un-conjugated
Application:	Western Blotting (WB)

Product Details

Immunogen:	Synthetic peptide located between aa143-192 of human TREM2 (Q9NZC2, NP_061838). Percent identity by BLAST analysis: Human, Chimpanzee, Gorilla, Monkey (100%), Gibbon, Marmoset, Horse (92%), Rat, Elephant (84%), Bovine (83%).  Type of Immunogen: Synthetic peptide
Specificity:	Human TREM2
Predicted Reactivity:	Percent identity by BLAST analysis: Human (100%) Horse (92%) Rat (84%) Bovine (83%).
Purification:	Immunoaffinity purified

Target Details

Target:	TREM2
---------	-------

## Target Details

---

Alternative Name: TREM2 / TREM-2 ([TREM2 Products](#))

---

Background: Name/Gene ID: TREM2

Synonyms: TREM2, Trem2b, TREM-2, Trem2a, Trem2c

---

Gene ID: 54209

---

NCBI Accession: [NP\\_061838](#)

---

UniProt: [Q9NZC2](#)

---

## Application Details

---

Application Notes: Approved: WB (0.2 - 1 µg/mL)

Usage: Western Blot: Suggested dilution at 1 µg/mL in 5 % skim milk / PBS buffer, and HRP conjugated anti-Rabbit IgG should be diluted in 1: 50,000 - 100,000 as secondary antibody.

---

Comment: Target Species of Antibody: Human

---

Restrictions: For Research Use only

---

## Handling

---

Format: Lyophilized

---

Reconstitution: Distilled water

---

Concentration: Lot specific

---

Buffer: Lyophilized from PBS with 2 % sucrose

---

Handling Advice: Avoid repeat freeze-thaw cycles.

---

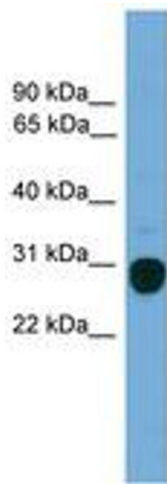
Storage: 4 °C, -20 °C

---

Storage Comment: Long term: -20°C, the use of 50% glycerol is recommended if storing aliquots in -20°C for long term use (up to 1 year)

Short term (less than 1 week): 4°C. Avoid freeze-thaw cycles.

---



**Image 1.**