

Datasheet for ABIN6744861
anti-FAM105A antibody (AA 71-120)[Go to Product page](#)

1 Image

Overview

Quantity:	100 µL
Target:	FAM105A
Binding Specificity:	AA 71-120
Reactivity:	Human, Mouse, Rat, Dog, Guinea Pig, Horse, Rabbit, Monkey, Pig, Bat
Host:	Rabbit
Clonality:	Polyclonal
Conjugate:	This FAM105A antibody is un-conjugated
Application:	Western Blotting (WB)

Product Details

Immunogen:	Synthetic peptide located between aa71-120 of human FAM105A (Q9NUU6, NP_061891). Percent identity by BLAST analysis: Human, Chimpanzee, Gorilla, Gibbon, Monkey, Galago, Marmoset, Mouse, Rat, Dog, Bat, Rabbit, Horse, Pig, Guinea pig (100%), Elephant, Bovine, Opossum (92%), Platypus (85%). Type of Immunogen: Synthetic peptide
Specificity:	Human FAM105A
Predicted Reactivity:	Percent identity by BLAST analysis: Rat, Dog, Rabbit, Horse (100%) Bovine (92%).
Purification:	Immunoaffinity purified

Target Details

Target:	FAM105A
Alternative Name:	FAM105A (FAM105A Products)
Background:	Name/Gene ID: FAM105A Synonyms: FAM105A, Protein FAM105A, NET20
Gene ID:	54491
NCBI Accession:	NP_061891
UniProt:	Q9NUU6

Application Details

Application Notes:	Approved: WB (0.2 - 1 µg/mL) Usage: Western Blot: Suggested dilution at 1 µg/mL in 5 % skim milk / PBS buffer, and HRP conjugated anti-Rabbit IgG should be diluted in 1: 50,000 - 100,000 as secondary antibody.
Comment:	Target Species of Antibody: Human
Restrictions:	For Research Use only

Handling

Format:	Lyophilized
Reconstitution:	Distilled water
Concentration:	Lot specific
Buffer:	Lyophilized from PBS with 2 % sucrose
Handling Advice:	Avoid repeat freeze-thaw cycles.
Storage:	4 °C, -20 °C
Storage Comment:	Long term: -20°C, the use of 50% glycerol is recommended if storing aliquots in -20°C for long term use (up to 1 year) Short term (less than 1 week): 4°C. Avoid freeze-thaw cycles.

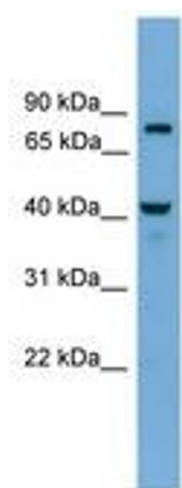


Image 1.