

Datasheet for ABIN6744870

**anti-TM4SF20 antibody (AA 107-156)**[Go to Product page](#)**1** Image

## Overview

Quantity:	100 µL
Target:	TM4SF20
Binding Specificity:	AA 107-156
Reactivity:	Human, Dog
Host:	Rabbit
Clonality:	Polyclonal
Conjugate:	This TM4SF20 antibody is un-conjugated
Application:	Western Blotting (WB)

## Product Details

Immunogen:	Synthetic peptide located between aa107-156 of human TM4SF20 (Q53R12, NP_079071). Percent identity by BLAST analysis: Human, Gorilla, Gibbon (100%), Panda (92%), Monkey (84%), Galago, Marmoset, Rat, Elephant (83%).  Type of Immunogen: Synthetic peptide
Specificity:	Human TM4SF20
Predicted Reactivity:	Percent identity by BLAST analysis:
Purification:	Immunoaffinity purified

## Target Details

Target:	TM4SF20
---------	---------

## Target Details

Alternative Name:	TM4SF20 ( <a href="#">TM4SF20 Products</a> )
Background:	Name/Gene ID: TM4SF20  Synonyms: TM4SF20, PRO994, TCCE518
Gene ID:	79853
NCBI Accession:	<a href="#">NP_079071</a>
UniProt:	<a href="#">Q53R12</a>

## Application Details

Application Notes:	Approved: WB (0.2 - 1 µg/mL)  Usage: Western Blot: Suggested dilution at 1 µg/mL in 5 % skim milk / PBS buffer, and HRP conjugated anti-Rabbit IgG should be diluted in 1: 50,000 - 100,000 as secondary antibody.
Comment:	Target Species of Antibody: Human
Restrictions:	For Research Use only

## Handling

Format:	Lyophilized
Reconstitution:	Distilled water
Concentration:	Lot specific
Buffer:	Lyophilized from PBS with 2 % sucrose
Handling Advice:	Avoid repeat freeze-thaw cycles.
Storage:	4 °C, -20 °C
Storage Comment:	Long term: -20°C, the use of 50% glycerol is recommended if storing aliquots in -20°C for long term use (up to 1 year)  Short term (less than 1 week): 4°C. Avoid freeze-thaw cycles.

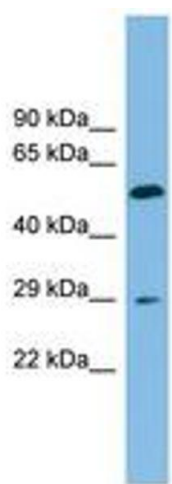


Image 1.