



Datasheet for ABIN6744872  
**anti-WNT3 antibody (AA 143-192)**



[Go to Product page](#)

1 Image

Overview

Quantity:	100 µL
Target:	WNT3
Binding Specificity:	AA 143-192
Reactivity:	Human, Mouse, Rat, Dog, Cow, Horse, Rabbit, Guinea Pig, Chicken, Monkey, Pig, Xenopus laevis, Bat
Host:	Rabbit
Clonality:	Polyclonal
Conjugate:	This WNT3 antibody is un-conjugated
Application:	Western Blotting (WB)

Product Details

Immunogen:	Synthetic peptide located between aa143-192 of human WNT3 (P56703, NP_110380). Percent identity by BLAST analysis: Human, Chimpanzee, Gorilla, Gibbon, Monkey, Galago, Marmoset, Mouse, Rat, Elephant, Panda, Dog, Bovine, Bat, Rabbit, Horse, Pig, Opossum, Guinea pig, Chicken, Lizard, Xenopus (100%), Newt, Seabass, Stickleback, Zebrafish (92%).  Type of Immunogen: Synthetic peptide
Specificity:	Human WNT3
Predicted Reactivity:	Percent identity by BLAST analysis: Human, Mouse, Rat, Dog, Rabbit, Horse, Pig, Chicken (100%) Zebrafish (92%).
Purification:	Immunoaffinity purified

## Target Details

---

Target:	WNT3
Alternative Name:	WNT3 ( <a href="#">WNT3 Products</a> )
Background:	Name/Gene ID: WNT3 Family: WNT  Synonyms: WNT3, Proto-oncogene Int-4 homolog, Proto-oncogene Wnt-3, INT4, WNT-3 proto-oncogene protein
Gene ID:	7473
NCBI Accession:	<a href="#">NP_110380</a>
UniProt:	<a href="#">P56703</a>
Pathways:	<a href="#">WNT Signaling</a> , <a href="#">Regulation of Cell Size</a>

## Application Details

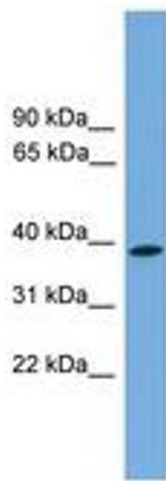
---

Application Notes:	Approved: WB (0.2 - 1 µg/mL)  Usage: Western Blot: Suggested dilution at 1 µg/mL in 5 % skim milk / PBS buffer, and HRP conjugated anti-Rabbit IgG should be diluted in 1: 50,000 - 100,000 as secondary antibody.
Comment:	Target Species of Antibody: Human
Restrictions:	For Research Use only

## Handling

---

Format:	Lyophilized
Reconstitution:	Distilled water
Concentration:	Lot specific
Buffer:	Lyophilized from PBS with 2 % sucrose
Handling Advice:	Avoid repeat freeze-thaw cycles.
Storage:	4 °C, -20 °C
Storage Comment:	Long term: -20°C, the use of 50% glycerol is recommended if storing aliquots in -20°C for long term use (up to 1 year) Short term (less than 1 week): 4°C. Avoid freeze-thaw cycles.



**Image 1.**