



[Go to Product page](#)

Datasheet for ABIN6744874
anti-ITFG3 antibody (AA 431-480)

1 Image

Overview

Quantity:	100 µL
Target:	ITFG3
Binding Specificity:	AA 431-480
Reactivity:	Human
Host:	Rabbit
Clonality:	Polyclonal
Conjugate:	This ITFG3 antibody is un-conjugated
Application:	Western Blotting (WB)

Product Details

Immunogen:	Synthetic peptide located between aa431-480 of human ITFG3 (Q9H0X4, NP_114428). Percent identity by BLAST analysis: Human, Gorilla, Baboon, Monkey (100%), Gibbon, Marmoset (92%). Type of Immunogen: Synthetic peptide
Specificity:	Human ITFG3
Predicted Reactivity:	Percent identity by BLAST analysis: Human (100%).
Purification:	Immunoaffinity purified

Target Details

Target:	ITFG3
Alternative Name:	FAM234A (ITFG3 Products)

Target Details

Background:	Name/Gene ID: FAM234A Synonyms: FAM234A, C16orf9, Gs19, Protein ITFG3, DKFZP761D0211, ITFG3
Gene ID:	83986
NCBI Accession:	NP_114428
UniProt:	Q9H0X4

Application Details

Application Notes:	Approved: WB (0.2 - 1 µg/mL) Usage: Western Blot: Suggested dilution at 1 µg/mL in 5 % skim milk / PBS buffer, and HRP conjugated anti-Rabbit IgG should be diluted in 1: 50,000 - 100,000 as secondary antibody.
Comment:	Target Species of Antibody: Human
Restrictions:	For Research Use only

Handling

Format:	Lyophilized
Reconstitution:	Distilled water
Concentration:	Lot specific
Buffer:	Lyophilized from PBS with 2 % sucrose
Handling Advice:	Avoid repeat freeze-thaw cycles.
Storage:	4 °C, -20 °C
Storage Comment:	Long term: -20°C, the use of 50% glycerol is recommended if storing aliquots in -20°C for long term use (up to 1 year) Short term (less than 1 week): 4°C. Avoid freeze-thaw cycles.

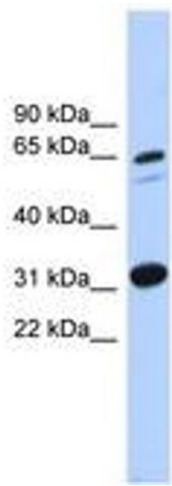


Image 1.