



[Go to Product page](#)

Datasheet for ABIN6744876
anti-ITLN2 antibody (AA 107-156)

1 Image

Overview

Quantity:	100 µL
Target:	ITLN2
Binding Specificity:	AA 107-156
Reactivity:	Human, Cow, Pig
Host:	Rabbit
Clonality:	Polyclonal
Conjugate:	This ITLN2 antibody is un-conjugated
Application:	Western Blotting (WB)

Product Details

Immunogen:	Synthetic peptide located between aa107-156 of human ITLN2 (Q8WWU7, NP_543154). Percent identity by BLAST analysis: Human, Chimpanzee, Gorilla, Gibbon, Marmoset, Bovine (100%), Monkey, Mouse, Rat, Sheep, Guinea pig, Xenopus (92%), Horse, Pig, Opossum (85%). Type of Immunogen: Synthetic peptide
Specificity:	Human ITLN2
Predicted Reactivity:	Percent identity by BLAST analysis: Human (100%) Sheep, Bovine (92%) Pig (85%).
Purification:	Immunoaffinity purified

Target Details

Target:	ITLN2
---------	-------

Target Details

Alternative Name: [Intelectin 2 / ITLN2 \(ITLN2 Products\)](#)

Background: Name/Gene ID: ITLN2

Synonyms: ITLN2, HL2, Intelectin-2, HL-2, Endothelial lectin HL-2, Intelectin 2

Gene ID: 142683

NCBI Accession: [NP_543154](#)

UniProt: [Q8WWU7](#)

Application Details

Application Notes: Approved: WB (0.2 - 1 µg/mL)

Usage: Western Blot: Suggested dilution at 1 µg/mL in 5 % skim milk / PBS buffer, and HRP conjugated anti-Rabbit IgG should be diluted in 1: 50,000 - 100,000 as secondary antibody.

Comment: Target Species of Antibody: Human

Restrictions: For Research Use only

Handling

Format: Lyophilized

Reconstitution: Distilled water

Concentration: Lot specific

Buffer: Lyophilized from PBS with 2 % sucrose

Handling Advice: Avoid repeat freeze-thaw cycles.

Storage: 4 °C, -20 °C

Storage Comment: Long term: -20°C, the use of 50% glycerol is recommended if storing aliquots in -20°C for long term use (up to 1 year)

Short term (less than 1 week): 4°C. Avoid freeze-thaw cycles.

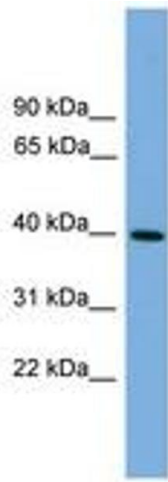


Image 1.