



Datasheet for ABIN6744889  
**anti-ZBTB46 antibody (AA 179-228)**



[Go to Product page](#)

1 Image

Overview

Quantity:	100 µL
Target:	ZBTB46 (ZNF340)
Binding Specificity:	AA 179-228
Reactivity:	Human, Mouse, Rat, Cow, Rabbit, Horse
Host:	Rabbit
Clonality:	Polyclonal
Conjugate:	This ZBTB46 antibody is un-conjugated
Application:	Western Blotting (WB)

Product Details

Immunogen:	Synthetic peptide located between aa179-228 of human ZBTB46 (Q6ZMU8, NP_079500). Percent identity by BLAST analysis: Human, Gorilla, Gibbon, Monkey, Mouse, Rat, Horse (100%), Marmoset, Dog (92%), Panda (85%), Bovine, Bat (84%).  Type of Immunogen: Synthetic peptide
Specificity:	Human ZBTB46
Predicted Reactivity:	Percent identity by BLAST analysis: Human, Mouse, Rat (100%) Dog (92%) Bovine (84%).
Purification:	Immunoaffinity purified

Target Details

Target:	ZBTB46 (ZNF340)
---------	-----------------

## Target Details

---

Alternative Name:	ZBTB46 ( <a href="#">ZNF340 Products</a> )
Background:	Name/Gene ID: ZBTB46 Family: Zinc Finger  Synonyms: ZBTB46, BZEL, BTBD4, DJ583P15.8, RINZF, ZNF340, BTB (POZ) domain containing 4, DJ583P15.7, Zinc finger protein 340
Gene ID:	140685
NCBI Accession:	<a href="#">NP_079500</a>
UniProt:	<a href="#">Q86UZ6</a>

## Application Details

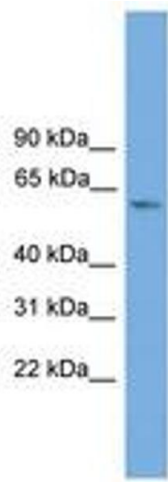
---

Application Notes:	Approved: WB (0.2 - 1 µg/mL)  Usage: Western Blot: Suggested dilution at 1 µg/mL in 5 % skim milk / PBS buffer, and HRP conjugated anti-Rabbit IgG should be diluted in 1: 50,000 - 100,000 as secondary antibody.
Comment:	Target Species of Antibody: Human
Restrictions:	For Research Use only

## Handling

---

Format:	Lyophilized
Reconstitution:	Distilled water
Concentration:	Lot specific
Buffer:	Lyophilized from PBS with 2 % sucrose
Handling Advice:	Avoid repeat freeze-thaw cycles.
Storage:	4 °C, -20 °C
Storage Comment:	Long term: -20°C, the use of 50% glycerol is recommended if storing aliquots in -20°C for long term use (up to 1 year) Short term (less than 1 week): 4°C. Avoid freeze-thaw cycles.



**Image 1.**