



Datasheet for ABIN6744894
anti-STK31 antibody (AA 215-264)



[Go to Product page](#)

1 Image

Overview

Quantity:	100 µL
Target:	STK31
Binding Specificity:	AA 215-264
Reactivity:	Human, Rat, Mouse, Monkey, Horse, Pig, Cow, Dog, Bat
Host:	Rabbit
Clonality:	Polyclonal
Conjugate:	This STK31 antibody is un-conjugated
Application:	Western Blotting (WB)

Product Details

Immunogen:	Synthetic peptide located between aa215-264 of human STK31 (B4DZ06, NP_116562). Percent identity by BLAST analysis: Human, Chimpanzee, Gibbon, Monkey, Galago, Marmoset, Mouse, Rat, Bat, Pig (100%), Rabbit (91%), Elephant, Panda, Dog, Horse (84%). Type of Immunogen: Synthetic peptide
Specificity:	Human STK31
Predicted Reactivity:	Percent identity by BLAST analysis: Human, Mouse, Rat, Pig (100%) Rabbit (91%) Dog, Horse (84%).
Purification:	Immunoaffinity purified

Target Details

Target:	STK31
Alternative Name:	STK31 (STK31 Products)
Background:	Name/Gene ID: STK31 Subfamily: Other serine/threonine kinases Family: Protein Kinase Synonyms: STK31, SGK396, Serine/threonine kinase 31, Sugen kinase 396, TDRD8, Tudor domain containing 8
Gene ID:	56164
NCBI Accession:	NP_116562
UniProt:	Q9BXU1

Application Details

Application Notes:	Approved: WB (0.2 - 1 µg/mL) Usage: Western Blot: Suggested dilution at 1 µg/mL in 5 % skim milk / PBS buffer, and HRP conjugated anti-Rabbit IgG should be diluted in 1: 50,000 - 100,000 as secondary antibody.
Comment:	Target Species of Antibody: Human
Restrictions:	For Research Use only

Handling

Format:	Lyophilized
Reconstitution:	Distilled water
Concentration:	Lot specific
Buffer:	Lyophilized from PBS with 2 % sucrose
Handling Advice:	Avoid repeat freeze-thaw cycles.
Storage:	4 °C, -20 °C
Storage Comment:	Long term: -20°C, the use of 50% glycerol is recommended if storing aliquots in -20°C for long term use (up to 1 year) Short term (less than 1 week): 4°C. Avoid freeze-thaw cycles.

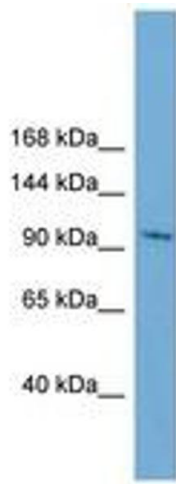


Image 1.