



[Go to Product page](#)

Datasheet for ABIN6744899
anti-C3orf67 antibody (AA 71-120)

1 Image

Overview

Quantity:	100 µL
Target:	C3orf67
Binding Specificity:	AA 71-120
Reactivity:	Human, Cow, Guinea Pig, Horse, Mouse, Rabbit, Rat, Monkey
Host:	Rabbit
Clonality:	Polyclonal
Conjugate:	This C3orf67 antibody is un-conjugated
Application:	Western Blotting (WB)

Product Details

Immunogen:	Synthetic peptide located between aa71-120 of human C3orf67 (Q6ZVT6, NP_940865). Percent identity by BLAST analysis: Human, Chimpanzee, Gorilla, Monkey, Marmoset, Mouse, Rat, Elephant, Bovine, Horse, Guinea pig (100%), Gibbon, Panda, Dog (92%), Rabbit (85%), Galago (84%), Opossum (83%). Type of Immunogen: Synthetic peptide
Specificity:	Human C3orf67
Predicted Reactivity:	Percent identity by BLAST analysis: Human, Bovine, Horse, Guinea pig (100%) Dog (92%) Rabbit (85%).
Purification:	Immunoaffinity purified

Target Details

Target:	C3orf67
Alternative Name:	C3orf67 (C3orf67 Products)
Background:	Name/Gene ID: C3orf67 Synonyms: C3orf67
Gene ID:	200844
NCBI Accession:	NP_940865

Application Details

Application Notes:	Approved: WB (0.2 - 1 µg/mL) Usage: Western Blot: Suggested dilution at 1 µg/mL in 5 % skim milk / PBS buffer, and HRP conjugated anti-Rabbit IgG should be diluted in 1: 50,000 - 100,000 as secondary antibody.
Comment:	Target Species of Antibody: Human
Restrictions:	For Research Use only

Handling

Format:	Lyophilized
Reconstitution:	Distilled water
Concentration:	Lot specific
Buffer:	Lyophilized from PBS with 2 % sucrose
Handling Advice:	Avoid repeat freeze-thaw cycles.
Storage:	4 °C,-20 °C
Storage Comment:	Long term: -20°C, the use of 50% glycerol is recommended if storing aliquots in -20°C for long term use (up to 1 year) Short term (less than 1 week): 4°C. Avoid freeze-thaw cycles.

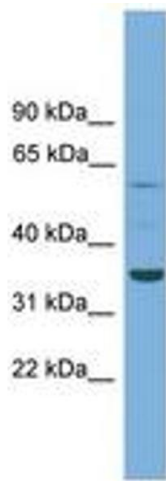


Image 1.