



[Go to Product page](#)

Datasheet for ABIN6744900

anti-Retinoblastoma Binding Protein 8 antibody (AA 791-840)

1 Image

Overview

Quantity:	100 µL
Target:	Retinoblastoma Binding Protein 8 (RBBP8)
Binding Specificity:	AA 791-840
Reactivity:	Human
Host:	Rabbit
Clonality:	Polyclonal
Conjugate:	This Retinoblastoma Binding Protein 8 antibody is un-conjugated
Application:	Western Blotting (WB)

Product Details

Immunogen:	Synthetic peptide located between aa791-840 of human RBBP8 (A6NKN2, NP_976037). Percent identity by BLAST analysis: Human (100%), Orangutan (92%). Type of Immunogen: Synthetic peptide
Specificity:	Human RBBP8 / CTIP
Predicted Reactivity:	Percent identity by BLAST analysis: Human (100%).
Purification:	Immunoaffinity purified

Target Details

Target:	Retinoblastoma Binding Protein 8 (RBBP8)
Alternative Name:	RBBP8 / CTIP (RBBP8 Products)

Target Details

Background:	Name/Gene ID: RBBP8 Synonyms: RBBP8, CTIP, DNA endonuclease RBBP8, RIM, SAE2, COM1, CtBP-interacting protein, JWDS, RBBP-8, SCKL2, Seckel syndrome 2
Gene ID:	5932
NCBI Accession:	NP_976037
UniProt:	Q99708
Pathways:	Cell Division Cycle , DNA Damage Repair

Application Details

Application Notes:	Approved: WB (0.2 - 1 µg/mL) Usage: Western Blot: Suggested dilution at 1 µg/mL in 5 % skim milk / PBS buffer, and HRP conjugated anti-Rabbit IgG should be diluted in 1: 50,000 - 100,000 as secondary antibody.
Comment:	Target Species of Antibody: Human
Restrictions:	For Research Use only

Handling

Format:	Lyophilized
Reconstitution:	Distilled water
Concentration:	Lot specific
Buffer:	Lyophilized from PBS with 2 % sucrose
Handling Advice:	Avoid repeat freeze-thaw cycles.
Storage:	4 °C, -20 °C
Storage Comment:	Long term: -20°C, the use of 50% glycerol is recommended if storing aliquots in -20°C for long term use (up to 1 year) Short term (less than 1 week): 4°C. Avoid freeze-thaw cycles.

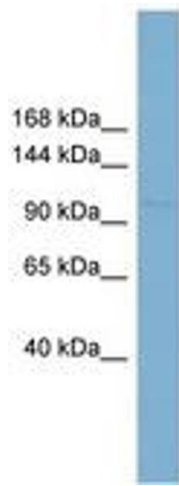


Image 1.