



[Go to Product page](#)

Datasheet for ABIN6744915
anti-DEPDC7 antibody (AA 107-156)

1 Image

Overview

Quantity:	100 µL
Target:	DEPDC7
Binding Specificity:	AA 107-156
Reactivity:	Human, Mouse, Rat, Dog, Monkey
Host:	Rabbit
Clonality:	Polyclonal
Conjugate:	This DEPDC7 antibody is un-conjugated
Application:	Western Blotting (WB)

Product Details

Immunogen:	Synthetic peptide located between aa107-156 of human DEPDC7 (Q95JW3, NP_631899). Percent identity by BLAST analysis: Human, Chimpanzee, Gorilla, Orangutan, Gibbon, Monkey, Marmoset, Mouse, Rat, Elephant, Dog (100%), Panda, Bovine, Bat, Horse (92%), Rabbit (91%), Guinea pig (90%). Type of Immunogen: Synthetic peptide
Specificity:	Human DEPDC7
Predicted Reactivity:	Percent identity by BLAST analysis: Human, Dog (100%) Bovine, Horse (92%) Rabbit (91%) Guinea pig (90%).
Purification:	Immunoaffinity purified

Target Details

Target:	DEPDC7
Alternative Name:	DEPDC7 (DEPDC7 Products)
Background:	Name/Gene ID: DEPDC7 Synonyms: DEPDC7, DEP domain containing 7, DJ85M6.4, Novel 58.3 KDA protein, TR2, Protein TR2/D15
Gene ID:	91614
NCBI Accession:	NP_631899
UniProt:	Q96QD5

Application Details

Application Notes:	Approved: WB (0.2 - 1 µg/mL) Usage: Western Blot: Suggested dilution at 0.25 µg/mL in 5 % skim milk / PBS buffer, and HRP conjugated anti-Rabbit IgG should be diluted in 1: 50,000 - 100,000 as secondary antibody.
Comment:	Target Species of Antibody: Human
Restrictions:	For Research Use only

Handling

Format:	Lyophilized
Reconstitution:	Distilled water
Concentration:	Lot specific
Buffer:	Lyophilized from PBS with 2 % sucrose
Handling Advice:	Avoid repeat freeze-thaw cycles.
Storage:	4 °C, -20 °C
Storage Comment:	Long term: -20°C, the use of 50% glycerol is recommended if storing aliquots in -20°C for long term use (up to 1 year) Short term (less than 1 week): 4°C. Avoid freeze-thaw cycles.

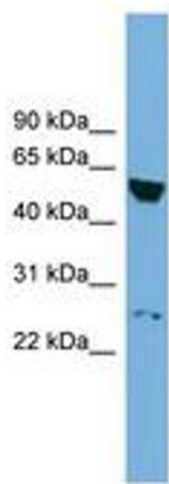


Image 1.