

Datasheet for ABIN6744920  
**anti-RIBC1 antibody (AA 215-264)**[Go to Product page](#)

## 1 Image

## Overview

Quantity:	100 µL
Target:	RIBC1
Binding Specificity:	AA 215-264
Reactivity:	Human, Cow, Dog, Horse, Rabbit, Monkey
Host:	Rabbit
Clonality:	Polyclonal
Conjugate:	This RIBC1 antibody is un-conjugated
Application:	Western Blotting (WB)

## Product Details

Immunogen:	Synthetic peptide located between aa215-264 of human RIBC1 (Q8N443, NP_001026915). Percent identity by BLAST analysis: Human, Chimpanzee, Gorilla, Monkey, Marmoset (100%), Mouse, Rat (91%), Elephant, Panda, Dog, Bovine, Pig (85%).  Type of Immunogen: Synthetic peptide
Specificity:	Human RIBC1
Predicted Reactivity:	Percent identity by BLAST analysis: Human (100%) Mouse, Rat (91%) Dog, Bovine (85%).
Purification:	Immunoaffinity purified

## Target Details

Target:	RIBC1
---------	-------

## Target Details

Alternative Name: RIBC1 ([RIBC1 Products](#))

Background: Name/Gene ID: RIBC1

Synonyms: RIBC1

Gene ID: 158787

NCBI Accession: [NP\\_001026915](#)

UniProt: [Q8N443](#)

## Application Details

Application Notes: Approved: WB (0.2 - 1 µg/mL)

Usage: Western Blot: Suggested dilution at 1 µg/mL in 5 % skim milk / PBS buffer, and HRP conjugated anti-Rabbit IgG should be diluted in 1: 50,000 - 100,000 as secondary antibody.

Comment: Target Species of Antibody: Human

Restrictions: For Research Use only

## Handling

Format: Lyophilized

Reconstitution: Distilled water

Concentration: Lot specific

Buffer: Lyophilized from PBS with 2 % sucrose

Handling Advice: Avoid repeat freeze-thaw cycles.

Storage: 4 °C, -20 °C

Storage Comment: Long term: -20°C, the use of 50% glycerol is recommended if storing aliquots in -20°C for long term use (up to 1 year)  
Short term (less than 1 week): 4°C. Avoid freeze-thaw cycles.

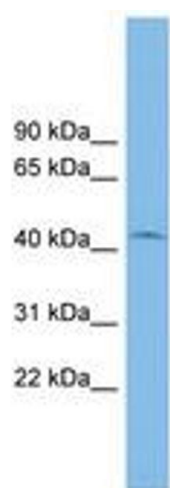


Image 1.