



[Go to Product page](#)

Datasheet for ABIN6744921
anti-MDH1B antibody (C-Term)

1 Image

Overview

Quantity:	100 µL
Target:	MDH1B
Binding Specificity:	C-Term
Reactivity:	Human
Host:	Rabbit
Clonality:	Polyclonal
Conjugate:	This MDH1B antibody is un-conjugated
Application:	Western Blotting (WB)

Product Details

Immunogen:	Synthetic peptide from C-Terminus of human MDH1B (Q5I0G3, NP_001034934). Percent identity by BLAST analysis: Human, Orangutan (100%), Gorilla, Gibbon (92%), Monkey, Marmoset (85%). Type of Immunogen: Synthetic peptide
Specificity:	Human MDH1B
Predicted Reactivity:	Percent identity by BLAST analysis: Human (100%).
Purification:	Immunoaffinity purified

Target Details

Target:	MDH1B
---------	-------

Target Details

Alternative Name:	MDH1B (MDH1B Products)
Background:	Name/Gene ID: MDH1B Synonyms: MDH1B, RP11-95H11
Gene ID:	130752
NCBI Accession:	NP_001034934
UniProt:	Q5I0G3

Application Details

Application Notes:	Approved: WB (0.2 - 1 µg/mL) Usage: Western Blot: Suggested dilution at 1 µg/mL in 5 % skim milk / PBS buffer, and HRP conjugated anti-Rabbit IgG should be diluted in 1: 50,000 - 100,000 as secondary antibody.
Comment:	Target Species of Antibody: Human
Restrictions:	For Research Use only

Handling

Format:	Lyophilized
Reconstitution:	Distilled water
Concentration:	Lot specific
Buffer:	Lyophilized from PBS with 2 % sucrose
Handling Advice:	Avoid repeat freeze-thaw cycles.
Storage:	4 °C,-20 °C
Storage Comment:	Long term: -20°C, the use of 50% glycerol is recommended if storing aliquots in -20°C for long term use (up to 1 year) Short term (less than 1 week): 4°C. Avoid freeze-thaw cycles.

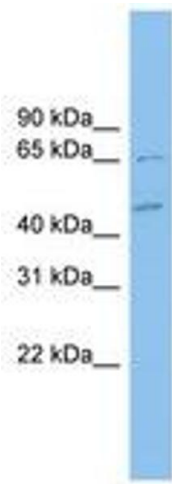


Image 1.