

Datasheet for ABIN6744928
anti-CSK antibody (AA 323-372)



[Go to Product page](#)

1 Image

Overview

Quantity:	100 µL
Target:	CSK
Binding Specificity:	AA 323-372
Reactivity:	Human, Mouse, Rat, Cow, Dog, Monkey, Zebrafish (Danio rerio), Chicken, Guinea Pig, Horse, Bat, Pig, Hamster
Host:	Rabbit
Clonality:	Polyclonal
Conjugate:	This CSK antibody is un-conjugated
Application:	Western Blotting (WB)

Product Details

Immunogen:	Synthetic peptide located between aa323-372 of human CSK (P41240, NP_004374). Percent identity by BLAST analysis: Human, Chimpanzee, Gorilla, Gibbon, Monkey, Galago, Marmoset, Mouse, Rat, Hamster, Elephant, Dog, Bovine, Bat, Horse, Pig, Opossum, Guinea pig, Turkey, Chicken, Zebrafish (100%), Xenopus (85%). Type of Immunogen: Synthetic peptide
Specificity:	Human CSK
Predicted Reactivity:	Percent identity by BLAST analysis: Human, Mouse, Rat, Dog, Bovine, Horse, Pig, Guinea pig, Chicken, Zebrafish (100%) Xenopus (92%).
Purification:	Immunoaffinity purified

Target Details

Target:	CSK
Alternative Name:	c-Src Kinase / CSK (CSK Products)
Background:	Name/Gene ID: CSK Subfamily: Csk Family: Protein Kinase Synonyms: CSK, C-src tyrosine kinase, C-Src kinase, Protein-tyrosine kinase CYL, Tyrosine-protein kinase CSK, C-SRC, Cytoplasmic tyrosine kinase
Gene ID:	1445
NCBI Accession:	NP_004374
UniProt:	P41240
Pathways:	TCR Signaling , EGFR Signaling Pathway , Cell-Cell Junction Organization , CXCR4-mediated Signaling Events

Application Details

Application Notes:	Approved: WB (0.2 - 1 µg/mL) Usage: Western Blot: Suggested dilution at 1 µg/mL in 5 % skim milk / PBS buffer, and HRP conjugated anti-Rabbit IgG should be diluted in 1: 50,000 - 100,000 as secondary antibody.
Comment:	Target Species of Antibody: Human
Restrictions:	For Research Use only

Handling

Format:	Lyophilized
Reconstitution:	Distilled water
Concentration:	Lot specific
Buffer:	Lyophilized from PBS with 2 % sucrose
Handling Advice:	Avoid repeat freeze-thaw cycles.
Storage:	4 °C,-20 °C
Storage Comment:	Long term: -20°C, the use of 50% glycerol is recommended if storing aliquots in -20°C for long

Handling

term use (up to 1 year)

Short term (less than 1 week): 4°C. Avoid freeze-thaw cycles.

Images

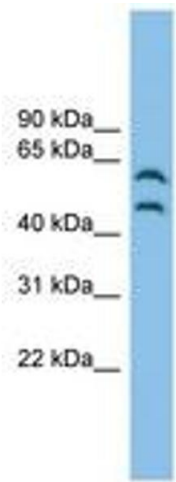


Image 1.