



Datasheet for ABIN6744930
anti-DOM3Z antibody (AA 35-84)



[Go to Product page](#)

1 Image

Overview

Quantity:	100 µL
Target:	DOM3Z
Binding Specificity:	AA 35-84
Reactivity:	Human, Mouse, Rat, Cow, Horse, Rabbit, Monkey
Host:	Rabbit
Clonality:	Polyclonal
Conjugate:	This DOM3Z antibody is un-conjugated
Application:	Western Blotting (WB)

Product Details

Immunogen:	Synthetic peptide located between aa35-84 of human DOM3Z (O77932, NP_005501). Percent identity by BLAST analysis: Human, Chimpanzee, Gorilla, Gibbon, Monkey, Galago, Marmoset, Mouse, Rat, Elephant, Bovine, Rabbit, Horse (100%), Panda, Dog, Bat, Pig (92%), Guinea pig (85%). Type of Immunogen: Synthetic peptide
Specificity:	Human DOM3Z
Predicted Reactivity:	Percent identity by BLAST analysis: Human, Mouse, Rat, Bovine, Rabbit, Horse (100%) Dog, Pig (92%).
Purification:	Immunoaffinity purified

Target Details

Target:	DOM3Z
Alternative Name:	DXO / DOM3Z (DOM3Z Products)
Background:	Name/Gene ID: DXO Synonyms: DXO, Dom-3 homolog Z, DOM3L, Dom-3 homolog Z (C. elegans), DOM3Z, DOM-3 (C. elegans) homolog Z, NG6, Protein Dom3Z, decapping and exoribonuclease protein
Gene ID:	1797
NCBI Accession:	NP_005501

Application Details

Application Notes:	Approved: WB (0.2 - 1 µg/mL) Usage: Western Blot: Suggested dilution at 1 µg/mL in 5 % skim milk / PBS buffer, and HRP conjugated anti-Rabbit IgG should be diluted in 1: 50,000 - 100,000 as secondary antibody.
Comment:	Target Species of Antibody: Human
Restrictions:	For Research Use only

Handling

Format:	Lyophilized
Reconstitution:	Distilled water
Concentration:	Lot specific
Buffer:	Lyophilized from PBS with 2 % sucrose
Storage:	4 °C,-20 °C
Storage Comment:	Long term: -20°C, the use of 50% glycerol is recommended if storing aliquots in -20°C for long term use (up to 1 year) Short term (less than 1 week): 4°C. Avoid freeze-thaw cycles.

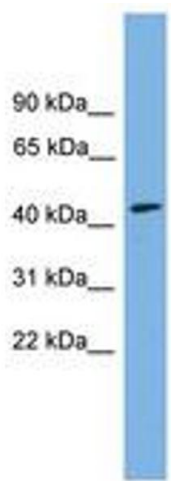


Image 1.