



[Go to Product page](#)

Datasheet for ABIN6744932
anti-ACTR1B antibody (AA 251-300)

1 Image

Overview

Quantity:	100 µL
Target:	ACTR1B
Binding Specificity:	AA 251-300
Reactivity:	Human, Mouse, Rat, Dog, Rabbit, Guinea Pig, Monkey, Bat
Host:	Rabbit
Clonality:	Polyclonal
Conjugate:	This ACTR1B antibody is un-conjugated
Application:	Western Blotting (WB)

Product Details

Immunogen:	Synthetic peptide located between aa251-300 of human ACTR1B (P42025, NP_005726). Percent identity by BLAST analysis: Human, Chimpanzee, Monkey, Marmoset, Mouse, Rat, Elephant, Panda, Dog, Bat, Rabbit, Opossum, Guinea pig (100%), Bovine, Horse, Pig (92%), Galago (85%), Salmon, Zebrafish (84%). Type of Immunogen: Synthetic peptide
Specificity:	Human ACTR1B
Predicted Reactivity:	Percent identity by BLAST analysis: Human, Mouse, Rat, Dog, Guinea pig (100%) Horse, Pig (92%).
Purification:	Immunoaffinity purified

Target Details

Target:	ACTR1B
Alternative Name:	ACTR1B / PC3 (ACTR1B Products)
Background:	Name/Gene ID: ACTR1B Synonyms: ACTR1B, Actin-related protein 1B, Beta-centractin, Centractin beta, PC3, ARP1B, CTRN2
Gene ID:	10120
NCBI Accession:	NP_005726
UniProt:	P42025

Application Details

Application Notes:	Approved: WB (0.2 - 1 µg/mL) Usage: Western Blot: Suggested dilution at 1 µg/mL in 5 % skim milk / PBS buffer, and HRP conjugated anti-Rabbit IgG should be diluted in 1: 50,000 - 100,000 as secondary antibody.
Comment:	Target Species of Antibody: Human
Restrictions:	For Research Use only

Handling

Format:	Lyophilized
Reconstitution:	Distilled water
Concentration:	Lot specific
Buffer:	Lyophilized from PBS with 2 % sucrose
Handling Advice:	Avoid repeat freeze-thaw cycles.
Storage:	4 °C, -20 °C
Storage Comment:	Long term: -20°C, the use of 50% glycerol is recommended if storing aliquots in -20°C for long term use (up to 1 year) Short term (less than 1 week): 4°C. Avoid freeze-thaw cycles.

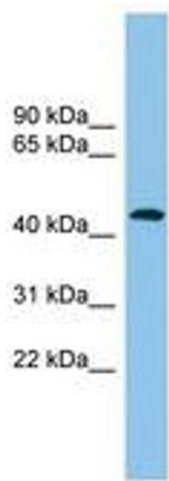


Image 1.