



[Go to Product page](#)

Datasheet for ABIN6744933
anti-RABEPK antibody (N-Term)

1 Image

Overview

Quantity:	100 µL
Target:	RABEPK
Binding Specificity:	N-Term
Reactivity:	Human, Pig, Rabbit, Cow, Horse, Hamster
Host:	Rabbit
Clonality:	Polyclonal
Conjugate:	This RABEPK antibody is un-conjugated
Application:	Western Blotting (WB)

Product Details

Immunogen:	Synthetic peptide from N-Terminus of human RABEPK (Q7Z6M1, NP_005824). Percent identity by BLAST analysis: Human, Gorilla, Gibbon, Monkey, Galago, Hamster, Bovine, Horse, Pig (100%), Marmoset, Mouse, Rat, Elephant, Dog, Guinea pig (92%), Rabbit (85%). Type of Immunogen: Synthetic peptide
Specificity:	Human RABEPK / p40
Predicted Reactivity:	Percent identity by BLAST analysis: Human, Pig (100%) Mouse, Dog (92%) Rabbit (85%).
Purification:	Immunoaffinity purified

Target Details

Target:	RABEPK
---------	--------

Target Details

Alternative Name:	RABEPK / p40 (RABEPK Products)
Background:	Name/Gene ID: RABEPK Synonyms: RABEPK, 40 kDa Rab9 effector protein, BA65N13.1, Rab9 effector p40, RAB9P40, p40
Gene ID:	10244
NCBI Accession:	NP_005824
UniProt:	Q7Z6M1

Application Details

Application Notes:	Approved: WB (0.2 - 1 µg/mL) Usage: Western Blot: Suggested dilution at 1 µg/mL in 5 % skim milk / PBS buffer, and HRP conjugated anti-Rabbit IgG should be diluted in 1: 50,000 - 100,000 as secondary antibody.
Comment:	Target Species of Antibody: Human
Restrictions:	For Research Use only

Handling

Format:	Lyophilized
Reconstitution:	Distilled water
Concentration:	Lot specific
Buffer:	Lyophilized from PBS with 2 % sucrose
Handling Advice:	Avoid repeat freeze-thaw cycles.
Storage:	4 °C, -20 °C
Storage Comment:	Long term: -20°C, the use of 50% glycerol is recommended if storing aliquots in -20°C for long term use (up to 1 year) Short term (less than 1 week): 4°C. Avoid freeze-thaw cycles.

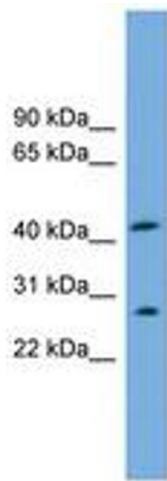


Image 1.