



[Go to Product page](#)

Datasheet for ABIN6744934
anti-RABEPK antibody (AA 35-84)

1 Image

Overview

Quantity:	100 µL
Target:	RABEPK
Binding Specificity:	AA 35-84
Reactivity:	Human, Pig, Rabbit, Dog, Monkey
Host:	Rabbit
Clonality:	Polyclonal
Conjugate:	This RABEPK antibody is un-conjugated
Application:	Western Blotting (WB)

Product Details

Immunogen:	Synthetic peptide located between aa35-84 of human RABEPK (Q7Z6M1, NP_005824). Percent identity by BLAST analysis: Human, Gorilla, Gibbon, Monkey, Marmoset, Elephant, Rabbit, Pig (100%), Galago, Mouse, Rat, Hamster, Bovine, Horse (92%), Guinea pig (91%), Dog (85%), Opossum (84%). Type of Immunogen: Synthetic peptide
Specificity:	Human RABEPK / p40
Predicted Reactivity:	Percent identity by BLAST analysis: Human, Rabbit, Pig (100%) Mouse (92%) Dog (85%).
Purification:	Immunoaffinity purified

Target Details

Target:	RABEPK
Alternative Name:	RABEPK / p40 (RABEPK Products)
Background:	Name/Gene ID: RABEPK Synonyms: RABEPK, 40 kDa Rab9 effector protein, BA65N13.1, Rab9 effector p40, RAB9P40, p40
Gene ID:	10244
NCBI Accession:	NP_005824
UniProt:	Q7Z6M1

Application Details

Application Notes:	Approved: WB (0.2 - 1 µg/mL) Usage: Western Blot: Suggested dilution at 1 µg/mL in 5 % skim milk / PBS buffer, and HRP conjugated anti-Rabbit IgG should be diluted in 1: 50,000 - 100,000 as secondary antibody.
Comment:	Target Species of Antibody: Human
Restrictions:	For Research Use only

Handling

Format:	Lyophilized
Reconstitution:	Distilled water
Concentration:	Lot specific
Buffer:	Lyophilized from PBS with 2 % sucrose
Handling Advice:	Avoid repeat freeze-thaw cycles.
Storage:	4 °C, -20 °C
Storage Comment:	Long term: -20°C, the use of 50% glycerol is recommended if storing aliquots in -20°C for long term use (up to 1 year) Short term (less than 1 week): 4°C. Avoid freeze-thaw cycles.

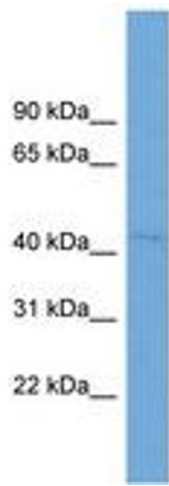


Image 1.