



[Go to Product page](#)

Datasheet for ABIN6744937

## anti-TUBB4 antibody (AA 35-84)

### 1 Image

#### Overview

Quantity:	100 µL
Target:	TUBB4 (TUBB4A)
Binding Specificity:	AA 35-84
Reactivity:	Human, Mouse, Rat, Dog, Monkey, Cow, Guinea Pig, Horse, Rabbit, Hamster, Bat, Pig
Host:	Rabbit
Clonality:	Polyclonal
Conjugate:	This TUBB4 antibody is un-conjugated
Application:	Western Blotting (WB)

#### Product Details

Immunogen:	Synthetic peptide located between aa35-84 of human TUBB4A (P04350, NP_006078). Percent identity by BLAST analysis: Human, Chimpanzee, Gorilla, Gibbon, Monkey, Galago, Marmoset, Mouse, Rat, Hamster, Dog, Bovine, Bat, Rabbit, Horse, Pig, Guinea pig (100%), Panda, Opossum, Zebra finch, Chicken, Platypus, Xenopus, Catfish, Smelt, Zebrafish, Mosquito, Slime mold (92%), Orangutan, Elephant, Stickleback (85%).  Type of Immunogen: Synthetic peptide
Specificity:	Human TUBB4
Predicted Reactivity:	Percent identity by BLAST analysis: Human, Rat, Dog, Rabbit, Guinea pig (100%) Mouse, Zebrafish (92%).
Purification:	Immunoaffinity purified

## Target Details

---

Target:	TUBB4 (TUBB4A)
Alternative Name:	TUBB4 ( <a href="#">TUBB4A Products</a> )
Background:	Name/Gene ID: TUBB4A Family: Tubulin  Synonyms: TUBB4A, Beta-5, Class IVa beta-tubulin, TUBB4, Tubulin 5 beta, Tubulin, beta 4 class IVa, Tubulin, beta 4A class IVa, Tubulin, beta, 5, Tubulin beta-4 chain, TUBB5, Tubulin beta-4A chain, Tubulin, beta 4
Gene ID:	10382
NCBI Accession:	<a href="#">NP_006078</a>
UniProt:	<a href="#">P04350</a>

## Application Details

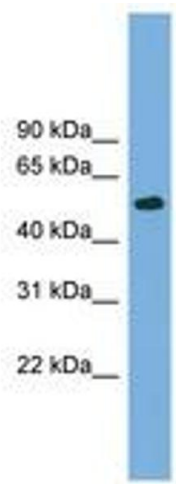
---

Application Notes:	Approved: WB (0.2 - 1 µg/mL)  Usage: Western Blot: Suggested dilution at 1 µg/mL in 5 % skim milk / PBS buffer, and HRP conjugated anti-Rabbit IgG should be diluted in 1: 50,000 - 100,000 as secondary antibody.
Comment:	Target Species of Antibody: Human
Restrictions:	For Research Use only

## Handling

---

Format:	Lyophilized
Reconstitution:	Distilled water
Concentration:	Lot specific
Buffer:	Lyophilized from PBS with 2 % sucrose
Handling Advice:	Avoid repeat freeze-thaw cycles.
Storage:	4 °C, -20 °C
Storage Comment:	Long term: -20°C, the use of 50% glycerol is recommended if storing aliquots in -20°C for long term use (up to 1 year) Short term (less than 1 week): 4°C. Avoid freeze-thaw cycles.



**Image 1.**