



Datasheet for ABIN6744939  
**anti-RAPGEF3 antibody (AA 359-408)**



[Go to Product page](#)

1 Image

Overview

|                      |  |
|----------------------|--|
| Quantity:            | 100 µL   |
| Target:              | RAPGEF3  |
| Binding Specificity: | AA 359-408   |
| Reactivity:          | Human, Mouse, Rat, Horse, Cow, Dog, Rabbit, Monkey |
| Host:                | Rabbit   |
| Clonality:           | Polyclonal   |
| Conjugate:           | This RAPGEF3 antibody is un-conjugated             |
| Application:         | Western Blotting (WB)                              |

Product Details

|                       |   |
|-----------------------|---|
| Immunogen:            | Synthetic peptide located between aa359-408 of human RAPGEF3 (O95398, NP_001092001).<br>Percent identity by BLAST analysis: Human, Chimpanzee, Gorilla, Monkey, Mouse, Rat, Dog, Bovine, Horse (100%), Gibbon, Galago, Elephant (92%), Guinea pig (91%), Marmoset, Bat (85%), Rabbit (84%).<br><br>Type of Immunogen: Synthetic peptide |
| Specificity:          | Human RAPGEF3 / EPAC  |
| Predicted Reactivity: | Percent identity by BLAST analysis: Human, Mouse, Rat, Dog, Horse (100%) Bovine (92%) Guinea pig (91%) Rabbit (84%).  |
| Purification:         | Immunoaffinity purified   |

## Target Details

---

|                   |   |
|-------------------|---|
| Target:           | RAPGEF3   |
| Alternative Name: | RAPGEF3 / EPAC ( <a href="#">RAPGEF3 Products</a> )   |
| Background:       | Name/Gene ID: RAPGEF3<br><br>Synonyms: RAPGEF3, Bcm910, CAMP-GEFI, CGEF1, HSU79275, EPAC, EPAC 1, EPAC1 |
| Gene ID:          | 10411   |
| NCBI Accession:   | <a href="#">NP_001092001</a>  |
| UniProt:          | <a href="#">O95398</a>  |
| Pathways:         | <a href="#">cAMP Metabolic Process</a>  |

## Application Details

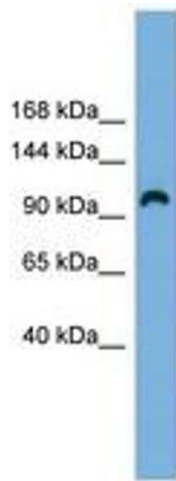
---

|                    |  |
|--------------------|--|
| Application Notes: | Approved: WB (0.2 - 1 µg/mL)<br><br>Usage: Western Blot: Suggested dilution at 1 µg/mL in 5 % skim milk / PBS buffer, and HRP conjugated anti-Rabbit IgG should be diluted in 1: 50,000 - 100,000 as secondary antibody. |
| Comment:           | Target Species of Antibody: Human  |
| Restrictions:      | For Research Use only  |

## Handling

---

|                  |   |
|------------------|---|
| Format:          | Lyophilized   |
| Reconstitution:  | Distilled water   |
| Concentration:   | Lot specific  |
| Buffer:          | Lyophilized from PBS with 2 % sucrose   |
| Handling Advice: | Avoid repeat freeze-thaw cycles.  |
| Storage:         | 4 °C, -20 °C  |
| Storage Comment: | Long term: -20°C, the use of 50% glycerol is recommended if storing aliquots in -20°C for long term use (up to 1 year)<br><br>Short term (less than 1 week): 4°C. Avoid freeze-thaw cycles. |



**Image 1.**