



[Go to Product page](#)

Datasheet for ABIN6744942

anti-PPIH antibody (AA 35-84)

1 Image

Overview

Quantity:	100 µL
Target:	PPIH
Binding Specificity:	AA 35-84
Reactivity:	Human, Mouse, Rat, Guinea Pig, Zebrafish (Danio rerio), Horse, Rabbit, Cow, Dog, Monkey, Bat, Pig, Chicken, Xenopus laevis
Host:	Rabbit
Clonality:	Polyclonal
Conjugate:	This PPIH antibody is un-conjugated
Application:	Western Blotting (WB)

Product Details

Immunogen:	Synthetic peptide located between aa35-84 of human PPIH (O43447, NP_006338). Percent identity by BLAST analysis: Human, Chimpanzee, Gorilla, Gibbon, Monkey, Galago, Marmoset, Mouse, Rat, Elephant, Dog, Bovine, Bat, Rabbit, Horse, Pig, Opossum, Guinea pig, Zebra finch, Chicken, Platypus, Xenopus (100%), Catfish, Salmon, Sablefish, Stickleback, Beetle (92%), Smelt, Zebrafish, Drosophila (85%). Type of Immunogen: Synthetic peptide
Specificity:	Human PPIH
Predicted Reactivity:	Percent identity by BLAST analysis: Human, Mouse, Rat, Dog, Bovine, Rabbit, Pig, Chicken, Xenopus (100%) Zebrafish (85%).

Product Details

Purification: Immunoaffinity purified

Target Details

Target: PPIH

Alternative Name: PPIH / Cyclophilin H ([PPIH Products](#))

Background: Name/Gene ID: PPIH

Synonyms: PPIH, Cyclophilin H, CYP-20, CYP20, PPIase H, Rotamase H, USA-CYP, CYPH, SnuCyp-20, USA-CyP SnuCyp-20

Gene ID: 10465

NCBI Accession: [NP_006338](#)

UniProt: [O43447](#)

Application Details

Application Notes: Approved: WB (0.2 - 1 µg/mL)

Usage: Western Blot: Suggested dilution at 1 µg/mL in 5 % skim milk / PBS buffer, and HRP conjugated anti-Rabbit IgG should be diluted in 1: 50,000 - 100,000 as secondary antibody.

Comment: Target Species of Antibody: Human

Restrictions: For Research Use only

Handling

Format: Lyophilized

Reconstitution: Distilled water

Concentration: Lot specific

Buffer: Lyophilized from PBS with 2 % sucrose

Handling Advice: Avoid repeat freeze-thaw cycles.

Storage: 4 °C, -20 °C

Storage Comment: Long term: -20°C, the use of 50% glycerol is recommended if storing aliquots in -20°C for long term use (up to 1 year)

Handling

Short term (less than 1 week): 4°C. Avoid freeze-thaw cycles.

Images

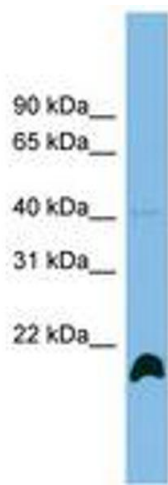


Image 1.