



## Datasheet for ABIN6744943 **anti-PPIH antibody (AA 71-120)**



[Go to Product page](#)

### 1 Image

#### Overview

Quantity:	100 µL
Target:	PPIH
Binding Specificity:	AA 71-120
Reactivity:	Human, Mouse, Rat, Guinea Pig, Zebrafish (Danio rerio), Horse, Rabbit, Cow, Dog, Monkey, Bat
Host:	Rabbit
Clonality:	Polyclonal
Conjugate:	This PPIH antibody is un-conjugated
Application:	Western Blotting (WB)

#### Product Details

Immunogen:	Synthetic peptide located between aa71-120 of human PPIH (O43447, NP_006338). Percent identity by BLAST analysis: Human, Chimpanzee, Gorilla, Gibbon, Monkey, Galago, Marmoset, Mouse, Rat, Elephant, Dog, Bovine, Bat, Rabbit, Horse, Opossum, Guinea pig, Rice, Penicillium (100%), Pig, Zebra finch, Chicken, Platypus, Catfish (92%), Xenopus, Blood fluke, Slime mold, Nematode, Arabidopsis, Castor bean (90%).  Type of Immunogen: Synthetic peptide
Specificity:	Human PPIH
Predicted Reactivity:	Percent identity by BLAST analysis: Human, Mouse, Rat, Dog, Bovine, Rabbit (100%) Pig, Chicken (92%) Xenopus (85%).
Purification:	Immunoaffinity purified

## Target Details

---

Target:	PPIH
Alternative Name:	PPIH / Cyclophilin H ( <a href="#">PPIH Products</a> )
Background:	Name/Gene ID: PPIH  Synonyms: PPIH, Cyclophilin H, CYP-20, CYP20, PPlase H, Rotamase H, USA-CYP, CYPH, SnuCyp-20, USA-CyP SnuCyp-20
Gene ID:	10465
NCBI Accession:	<a href="#">NP_006338</a>
UniProt:	<a href="#">O43447</a>

## Application Details

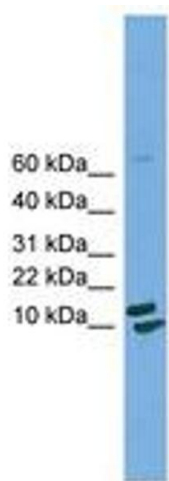
---

Application Notes:	Approved: WB (0.2 - 1 µg/mL)  Usage: Western Blot: Suggested dilution at 1 µg/mL in 5 % skim milk / PBS buffer, and HRP conjugated anti-Rabbit IgG should be diluted in 1: 50,000 - 100,000 as secondary antibody.
Comment:	Target Species of Antibody: Human
Restrictions:	For Research Use only

## Handling

---

Format:	Lyophilized
Reconstitution:	Distilled water
Concentration:	Lot specific
Buffer:	Lyophilized from PBS with 2 % sucrose
Handling Advice:	Avoid repeat freeze-thaw cycles.
Storage:	4 °C, -20 °C
Storage Comment:	Long term: -20°C, the use of 50% glycerol is recommended if storing aliquots in -20°C for long term use (up to 1 year)  Short term (less than 1 week): 4°C. Avoid freeze-thaw cycles.



**Image 1.**