



Datasheet for ABIN6744944
anti-VAT1 antibody (AA 71-120)



[Go to Product page](#)

1 Image

Overview

| | |
|----------------------|---|
| Quantity: | 100 µL |
| Target: | VAT1 |
| Binding Specificity: | AA 71-120 |
| Reactivity: | Human, Rat, Mouse, Zebrafish (Danio rerio), Horse, Monkey |
| Host: | Rabbit |
| Clonality: | Polyclonal |
| Conjugate: | This VAT1 antibody is un-conjugated |
| Application: | Western Blotting (WB) |

Product Details

| | |
|-----------------------|---|
| Immunogen: | Synthetic peptide located between aa71-120 of human VAT1 (Q99536, NP_006364). Percent identity by BLAST analysis: Human, Chimpanzee, Gorilla, Gibbon, Monkey, Galago, Marmoset, Mouse, Rat, Horse (100%), Elephant, Dog, Bovine (92%), Chicken (91%), Xenopus, Zebrafish (85%), Lizard (83%). Type of Immunogen: Synthetic peptide |
| Specificity: | Human VAT1 |
| Predicted Reactivity: | Percent identity by BLAST analysis: Human, Mouse, Rat, Horse (100%) Dog, Bovine (92%) Chicken (91%) Zebrafish (85%) Xenopus (84%). |
| Purification: | Immunoaffinity purified |

Target Details

| | |
|-------------------|---|
| Target: | VAT1 |
| Alternative Name: | VAT1 (VAT1 Products) |
| Background: | Name/Gene ID: VAT1 Synonyms: VAT1, Chromosome 17q21 mrna, VATI |
| Gene ID: | 10493 |
| NCBI Accession: | NP_006364 |
| UniProt: | Q99536 |

Application Details

| | |
|--------------------|--|
| Application Notes: | Approved: WB (0.2 - 1 µg/mL) Usage: Western Blot: Suggested dilution at 1 µg/mL in 5 % skim milk / PBS buffer, and HRP conjugated anti-Rabbit IgG should be diluted in 1: 50,000 - 100,000 as secondary antibody. |
| Comment: | Target Species of Antibody: Human |
| Restrictions: | For Research Use only |

Handling

| | |
|------------------|---|
| Format: | Lyophilized |
| Reconstitution: | Distilled water |
| Concentration: | Lot specific |
| Buffer: | Lyophilized from PBS with 2 % sucrose |
| Handling Advice: | Avoid repeat freeze-thaw cycles. |
| Storage: | 4 °C, -20 °C |
| Storage Comment: | Long term: -20°C, the use of 50% glycerol is recommended if storing aliquots in -20°C for long term use (up to 1 year) Short term (less than 1 week): 4°C. Avoid freeze-thaw cycles. |

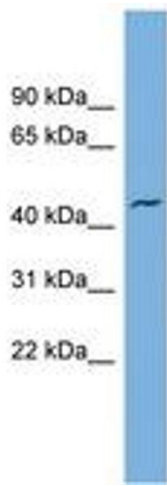


Image 1.