



[Go to Product page](#)

Datasheet for ABIN6744950  
**anti-FGL2 antibody (AA 251-300)**

1 Image

Overview

Quantity:	100 µL
Target:	FGL2
Binding Specificity:	AA 251-300
Reactivity:	Human, Mouse, Rat, Horse, Pig, Dog, Monkey, Bat
Host:	Rabbit
Clonality:	Polyclonal
Conjugate:	This FGL2 antibody is un-conjugated
Application:	Western Blotting (WB)

Product Details

Immunogen:	Synthetic peptide located between aa251-300 of human FGL2 (Q14314, NP_006673). Percent identity by BLAST analysis: Human, Chimpanzee, Gorilla, Gibbon, Monkey, Galago, Marmoset, Mouse, Rat, Panda, Dog, Bat, Horse, Pig (100%), Hamster, Bovine, Rabbit, Guinea pig (92%), Elephant, Platypus (85%).  Type of Immunogen: Synthetic peptide
Specificity:	Human FGL2
Predicted Reactivity:	Percent identity by BLAST analysis: Human, Mouse, Rat, Dog, Horse, Pig (100%) Bovine, Rabbit, Guinea pig (92%).
Purification:	Immunoaffinity purified

## Target Details

---

Target:	FGL2
Alternative Name:	FGL2 ( <a href="#">FGL2 Products</a> )
Background:	Name/Gene ID: FGL2  Synonyms: FGL2, Fibrinogen-like 2, Fibroleukin, Fibrinogen-like protein 2, PT49, T49
Gene ID:	10875
NCBI Accession:	<a href="#">NP_006673</a>
UniProt:	<a href="#">Q14314</a>

## Application Details

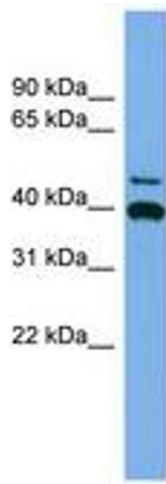
---

Application Notes:	Approved: WB (0.2 - 1 µg/mL)  Usage: Western Blot: Suggested dilution at 1 µg/mL in 5 % skim milk / PBS buffer, and HRP conjugated anti-Rabbit IgG should be diluted in 1: 50,000 - 100,000 as secondary antibody.
Comment:	Target Species of Antibody: Human
Restrictions:	For Research Use only

## Handling

---

Format:	Lyophilized
Reconstitution:	Distilled water
Concentration:	Lot specific
Buffer:	Lyophilized from PBS with 2 % sucrose
Handling Advice:	Avoid repeat freeze-thaw cycles.
Storage:	4 °C, -20 °C
Storage Comment:	Long term: -20°C, the use of 50% glycerol is recommended if storing aliquots in -20°C for long term use (up to 1 year)  Short term (less than 1 week): 4°C. Avoid freeze-thaw cycles.



**Image 1.**