

Datasheet for ABIN6744959
anti-SEC23IP antibody (AA 71-120)[Go to Product page](#)

1 Image

Overview

| | |
|----------------------|---|
| Quantity: | 100 µL |
| Target: | SEC23IP |
| Binding Specificity: | AA 71-120 |
| Reactivity: | Human, Mouse, Rat, Dog, Horse, Guinea Pig, Rabbit, Pig, Bat |
| Host: | Rabbit |
| Clonality: | Polyclonal |
| Conjugate: | This SEC23IP antibody is un-conjugated |
| Application: | Western Blotting (WB) |

Product Details

| | |
|-----------------------|---|
| Immunogen: | Synthetic peptide located between aa71-120 of human SEC23IP (Q9Y6Y8, NP_009121). Percent identity by BLAST analysis: Human, Gorilla, Orangutan, Gibbon, Galago, Mouse, Rat, Panda, Dog, Bat, Rabbit, Horse, Pig (100%), Monkey, Marmoset, Bovine, Opossum, Platypus, Lizard (92%), Guinea pig (87%), Elephant, Turkey, Zebra finch, Chicken (85%). Type of Immunogen: Synthetic peptide |
| Specificity: | Human SEC23IP |
| Predicted Reactivity: | Percent identity by BLAST analysis: Mouse, Rat, Dog, Rabbit, Horse, Pig (100%) Bovine (92%) Guinea pig (87%) Chicken (85%). |
| Purification: | Immunoaffinity purified |

Target Details

| | |
|-------------------|--|
| Target: | SEC23IP |
| Alternative Name: | SEC23IP / p125 (SEC23IP Products) |
| Background: | Name/Gene ID: SEC23IP Synonyms: SEC23IP, p125A, SEC23 interacting protein, SEC23-interacting protein, p125, MSTP053 |
| Gene ID: | 11196 |
| NCBI Accession: | NP_009121 |
| UniProt: | Q9Y6Y8 |

Application Details

| | |
|--------------------|--|
| Application Notes: | Approved: WB (0.2 - 1 µg/mL) Usage: Western Blot: Suggested dilution at 1 µg/mL in 5 % skim milk / PBS buffer, and HRP conjugated anti-Rabbit IgG should be diluted in 1: 50,000 - 100,000 as secondary antibody. |
| Comment: | Target Species of Antibody: Human |
| Restrictions: | For Research Use only |

Handling

| | |
|------------------|---|
| Format: | Lyophilized |
| Reconstitution: | Distilled water |
| Concentration: | Lot specific |
| Buffer: | Lyophilized from PBS with 2 % sucrose |
| Handling Advice: | Avoid repeat freeze-thaw cycles. |
| Storage: | 4 °C, -20 °C |
| Storage Comment: | Long term: -20°C, the use of 50% glycerol is recommended if storing aliquots in -20°C for long term use (up to 1 year) Short term (less than 1 week): 4°C. Avoid freeze-thaw cycles. |

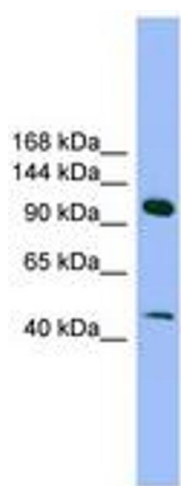


Image 1.