

Datasheet for ABIN6744964

## anti-NXPH3 antibody (AA 35-84)



[Go to Product page](#)

### 1 Image

#### Overview

Quantity:	100 µL
Target:	NXPH3
Binding Specificity:	AA 35-84
Reactivity:	Human, Mouse, Rat, Dog, Horse, Cow, Hamster, Monkey, Bat
Host:	Rabbit
Clonality:	Polyclonal
Conjugate:	This NXPH3 antibody is un-conjugated
Application:	Western Blotting (WB)

#### Product Details

Immunogen:	Synthetic peptide located between aa35-84 of human NXPH3 (Q9Z2N5, NP_009156). Percent identity by BLAST analysis: Human, Chimpanzee, Gorilla, Gibbon, Galago, Marmoset, Mouse, Rat, Hamster, Elephant, Panda, Dog, Bovine, Bat, Horse, Opossum (100%), Rabbit, Pig, Guinea pig (92%), Monkey (85%).  Type of Immunogen: Synthetic peptide
Specificity:	Human NXPH3
Predicted Reactivity:	Percent identity by BLAST analysis: Human, Mouse, Rat, Dog, Bovine, Horse (100%) Rabbit (92%).
Purification:	Immunoaffinity purified

## Target Details

Target:	NXPH3
Alternative Name:	NXPH3 / Neurexophilin 3 ( <a href="#">NXPH3 Products</a> )
Background:	Name/Gene ID: NXPH3  Synonyms: NXPH3, KIAA1159, Neurexophilin 3, NPH3, Neurexophilin-3
Gene ID:	11248
NCBI Accession:	<a href="#">NP_009156</a>
UniProt:	<a href="#">O95157</a>

## Application Details

Application Notes:	Approved: WB (0.2 - 1 µg/mL)  Usage: Western Blot: Suggested dilution at 1 µg/mL in 5 % skim milk / PBS buffer, and HRP conjugated anti-Rabbit IgG should be diluted in 1: 50,000 - 100,000 as secondary antibody.
Comment:	Target Species of Antibody: Human
Restrictions:	For Research Use only

## Handling

Format:	Lyophilized
Reconstitution:	Distilled water
Concentration:	Lot specific
Buffer:	Lyophilized from PBS with 2 % sucrose
Handling Advice:	Avoid repeat freeze-thaw cycles.
Storage:	4 °C, -20 °C
Storage Comment:	Long term: -20°C, the use of 50% glycerol is recommended if storing aliquots in -20°C for long term use (up to 1 year)  Short term (less than 1 week): 4°C. Avoid freeze-thaw cycles.

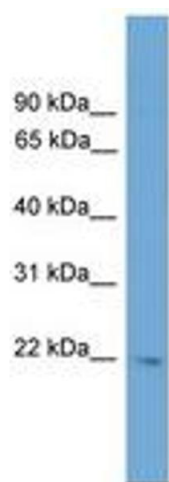


Image 1.