

Datasheet for ABIN6744968  
**anti-PNKP antibody (AA 359-408)**[Go to Product page](#)

## 1 Image

## Overview

Quantity:	100 µL
Target:	PNKP
Binding Specificity:	AA 359-408
Reactivity:	Human, Mouse, Rat, Dog, Cow, Guinea Pig, Horse, Bat, Hamster, Monkey, Pig
Host:	Rabbit
Clonality:	Polyclonal
Conjugate:	This PNKP antibody is un-conjugated
Application:	Western Blotting (WB)

## Product Details

Immunogen:	Synthetic peptide located between aa359-408 of human PNKP (Q96T60, NP_009185). Percent identity by BLAST analysis: Human, Chimpanzee, Gorilla, Gibbon, Monkey, Marmoset, Mouse, Rat, Hamster, Elephant, Dog, Bovine, Bat, Horse, Pig, Guinea pig (100%), Galago (92%), Stickleback (91%), Lizard (85%).  Type of Immunogen: Synthetic peptide
Specificity:	Human PNKP
Predicted Reactivity:	Percent identity by BLAST analysis: Human, Mouse, Rat, Dog, Bovine, Horse, Pig, Guinea pig (100%).
Purification:	Immunoaffinity purified

## Target Details

Target:	PNKP
Alternative Name:	PNKP ( <a href="#">PNKP Products</a> )
Background:	Name/Gene ID: PNKP  Synonyms: PNKP, EIEE10, DNA 5-kinase/3-phosphatase, PNK, MCSZ
Gene ID:	11284
NCBI Accession:	<a href="#">NP_009185</a>
UniProt:	<a href="#">Q96T60</a>
Pathways:	<a href="#">DNA Damage Repair</a> , <a href="#">Nucleotide Phosphorylation</a>

## Application Details

Application Notes:	Approved: WB (0.2 - 1 µg/mL)  Usage: Western Blot: Suggested dilution at 1 µg/mL in 5 % skim milk / PBS buffer, and HRP conjugated anti-Rabbit IgG should be diluted in 1: 50,000 - 100,000 as secondary antibody.
Comment:	Target Species of Antibody: Human
Restrictions:	For Research Use only

## Handling

Format:	Lyophilized
Reconstitution:	Distilled water
Concentration:	Lot specific
Buffer:	Lyophilized from PBS with 2 % sucrose
Handling Advice:	Avoid repeat freeze-thaw cycles.
Storage:	4 °C, -20 °C
Storage Comment:	Long term: -20°C, the use of 50% glycerol is recommended if storing aliquots in -20°C for long term use (up to 1 year)  Short term (less than 1 week): 4°C. Avoid freeze-thaw cycles.

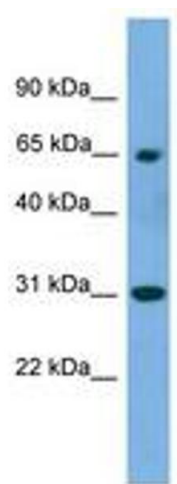


Image 1.