

Datasheet for ABIN6744971 anti-CRY2 antibody (AA 179-228)



[Go to Product page](#)

1 Image

Overview

Quantity:	100 µL
Target:	CRY2
Binding Specificity:	AA 179-228
Reactivity:	Human, Mouse, Rat, Cow, Dog, Guinea Pig, Horse, Rabbit, Sheep, Zebrafish (Danio rerio), Bat, Monkey, Pig
Host:	Rabbit
Clonality:	Polyclonal
Conjugate:	This CRY2 antibody is un-conjugated
Application:	Western Blotting (WB)

Product Details

Immunogen:	Synthetic peptide located between aa179-228 of human CRY2 (Q49AN0, NP_066940). Percent identity by BLAST analysis: Human, Gorilla, Gibbon, Monkey, Galago, Marmoset, Mouse, Rat, Sheep, Elephant, Dog, Bovine, Bat, Rabbit, Horse, Pig, Opossum, Guinea pig, Platypus (100%), Zebra finch, Chicken, Lizard (92%), Panda, Xenopus, Zebrafish (85%). Type of Immunogen: Synthetic peptide
Specificity:	Human CRY2
Predicted Reactivity:	Percent identity by BLAST analysis: Human, Mouse, Rat, Sheep, Dog, Bovine, Rabbit, Horse, Pig, Guinea pig (100%) Chicken (92%) Xenopus, Zebrafish (85%).
Purification:	Immunoaffinity purified

Target Details

Target:	CRY2
Alternative Name:	CRY2 (CRY2 Products)
Background:	Name/Gene ID: CRY2 Synonyms: CRY2, Cryptochrome-2, KIAA0658, Growth-inhibiting protein 37, Photolyase-like 2, PHLL2, HCRY2
Gene ID:	1408
NCBI Accession:	NP_066940
UniProt:	Q49AN0
Pathways:	Response to Water Deprivation , Protein targeting to Nucleus

Application Details

Application Notes:	Approved: WB (0.2 - 1 µg/mL) Usage: Western Blot: Suggested dilution at 1 µg/mL in 5 % skim milk / PBS buffer, and HRP conjugated anti-Rabbit IgG should be diluted in 1: 50,000 - 100,000 as secondary antibody.
Comment:	Target Species of Antibody: Human
Restrictions:	For Research Use only

Handling

Format:	Lyophilized
Reconstitution:	Distilled water
Concentration:	Lot specific
Buffer:	Lyophilized from PBS with 2 % sucrose
Handling Advice:	Avoid repeat freeze-thaw cycles.
Storage:	4 °C,-20 °C
Storage Comment:	Long term: -20°C, the use of 50% glycerol is recommended if storing aliquots in -20°C for long term use (up to 1 year) Short term (less than 1 week): 4°C. Avoid freeze-thaw cycles.

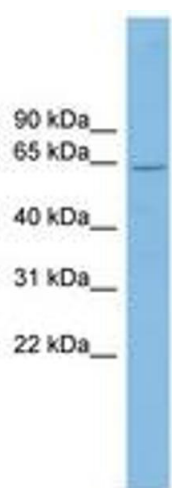


Image 1.