



Datasheet for ABIN6744974 **anti-ERI2 antibody (AA 71-120)**



[Go to Product page](#)

1 Image

Overview

Quantity:	100 µL
Target:	ERI2 (EXOD1)
Binding Specificity:	AA 71-120
Reactivity:	Human, Mouse, Horse, Rabbit, Rat, Cow, Pig, Bat, Monkey, Xenopus laevis
Host:	Rabbit
Clonality:	Polyclonal
Conjugate:	This ERI2 antibody is un-conjugated
Application:	Western Blotting (WB)

Product Details

Immunogen:	Synthetic peptide located between aa71-120 of human ERI2 (A8K979, NP_542394). Percent identity by BLAST analysis: Human, Chimpanzee, Gorilla, Gibbon, Monkey, Galago, Marmoset, Mouse, Rat, Panda, Bovine, Bat, Rabbit, Horse, Pig, Zebra finch, Platypus, Xenopus (100%), Guinea pig, Stickleback (92%), Elephant (85%), Opossum (84%). Type of Immunogen: Synthetic peptide
Specificity:	Human ERI2 / EXOD1
Predicted Reactivity:	Percent identity by BLAST analysis:
Purification:	Immunoaffinity purified

Target Details

Target:	ERI2 (EXOD1)
Alternative Name:	ERI2 / EXOD1 (EXOD1 Products)
Background:	Name/Gene ID: ERI2 Synonyms: ERI2, ERI1 exoribonuclease 2, Exoribonuclease 2, EXOD1, KIAA1504
Gene ID:	112479
NCBI Accession:	NP_542394
UniProt:	A8K979

Application Details

Application Notes:	Approved: WB (0.2 - 1 µg/mL) Usage: Western Blot: Suggested dilution at 1 µg/mL in 5 % skim milk / PBS buffer, and HRP conjugated anti-Rabbit IgG should be diluted in 1: 50,000 - 100,000 as secondary antibody.
Comment:	Target Species of Antibody: Human
Restrictions:	For Research Use only

Handling

Format:	Lyophilized
Reconstitution:	Distilled water
Concentration:	Lot specific
Buffer:	Lyophilized from PBS with 2 % sucrose
Handling Advice:	Avoid repeat freeze-thaw cycles.
Storage:	4 °C, -20 °C
Storage Comment:	Long term: -20°C, the use of 50% glycerol is recommended if storing aliquots in -20°C for long term use (up to 1 year) Short term (less than 1 week): 4°C. Avoid freeze-thaw cycles.

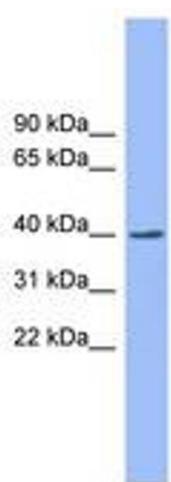


Image 1.