

Datasheet for ABIN6744978
anti-WIPF2 antibody (AA 323-372)[Go to Product page](#)

1 Image

Overview

Quantity:	100 µL
Target:	WIPF2
Binding Specificity:	AA 323-372
Reactivity:	Human, Mouse, Rat, Cow, Dog, Horse, Rabbit, Monkey, Bat, Pig
Host:	Rabbit
Clonality:	Polyclonal
Conjugate:	This WIPF2 antibody is un-conjugated
Application:	Western Blotting (WB)

Product Details

Immunogen:	Synthetic peptide located between aa323-372 of human WIPF2 (Q8TF74, NP_573571). Percent identity by BLAST analysis: Human, Chimpanzee, Gorilla, Gibbon, Monkey, Marmoset, Mouse, Rat, Elephant, Panda, Dog, Bovine, Bat, Rabbit, Horse, Pig, Opossum (100%), Guinea pig, Turkey, Lizard (92%), Xenopus, Zebrafish (86%), Stickleback (81%). Type of Immunogen: Synthetic peptide
Specificity:	Human WIPF2
Predicted Reactivity:	Percent identity by BLAST analysis: Human, Mouse, Rat, Dog, Bovine, Pig (100%) Guinea pig (92%) Xenopus (86%).
Purification:	Immunoaffinity purified

Target Details

Target:	WIPF2
Alternative Name:	WIPF2 / WIRE (WIPF2 Products)
Background:	Name/Gene ID: WIPF2 Synonyms: WIPF2, WASP-binding protein, WIP-related protein, WICH, WIRE
Gene ID:	147179
NCBI Accession:	NP_573571
UniProt:	Q8TF74

Application Details

Application Notes:	Approved: WB (0.2 - 1 µg/mL) Usage: Western Blot: Suggested dilution at 1 µg/mL in 5 % skim milk / PBS buffer, and HRP conjugated anti-Rabbit IgG should be diluted in 1: 50,000 - 100,000 as secondary antibody.
Comment:	Target Species of Antibody: Human
Restrictions:	For Research Use only

Handling

Format:	Lyophilized
Reconstitution:	Distilled water
Concentration:	Lot specific
Buffer:	Lyophilized from PBS with 2 % sucrose
Handling Advice:	Avoid repeat freeze-thaw cycles.
Storage:	4 °C, -20 °C
Storage Comment:	Long term: -20°C, the use of 50% glycerol is recommended if storing aliquots in -20°C for long term use (up to 1 year) Short term (less than 1 week): 4°C. Avoid freeze-thaw cycles.

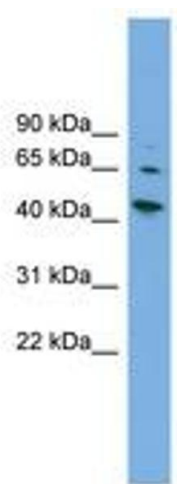


Image 1.