



[Go to Product page](#)

Datasheet for ABIN6744991
anti-FAM3D antibody (AA 143-192)

1 Image

Overview

Quantity:	100 µL
Target:	FAM3D
Binding Specificity:	AA 143-192
Reactivity:	Human, Cow, Dog, Horse, Monkey
Host:	Rabbit
Clonality:	Polyclonal
Conjugate:	This FAM3D antibody is un-conjugated
Application:	Western Blotting (WB)

Product Details

Immunogen:	Synthetic peptide located between aa143-192 of human FAM3D (Q96BQ1, NP_620160). Percent identity by BLAST analysis: Human, Chimpanzee, Gorilla, Gibbon, Monkey (100%), Elephant (85%), Dog, Bovine, Bat, Horse, Stickleback (84%), Mouse, Rat (76%). Type of Immunogen: Synthetic peptide
Specificity:	Human FAM3D
Predicted Reactivity:	Percent identity by BLAST analysis: Human (100%) Bovine (84%).
Purification:	Immunoaffinity purified

Target Details

Target:	FAM3D
---------	-------

Target Details

Alternative Name: FAM3D ([FAM3D Products](#))

Background: Name/Gene ID: FAM3D

Synonyms: FAM3D, Cytokine-like protein EF-7, EF7, OIT1, Protein FAM3D

Gene ID: 131177

NCBI Accession: [NP_620160](#)

UniProt: [Q96BQ1](#)

Application Details

Application Notes: Approved: WB (0.2 - 1 µg/mL)

Usage: Western Blot: Suggested dilution at 1 µg/mL in 5 % skim milk / PBS buffer, and HRP conjugated anti-Rabbit IgG should be diluted in 1: 50,000 - 100,000 as secondary antibody.

Comment: Target Species of Antibody: Human

Restrictions: For Research Use only

Handling

Format: Lyophilized

Reconstitution: Reconstitute with 50 µL sterile ddH₂O.

Concentration: Lot specific

Buffer: Lyophilized from PBS with 2 % sucrose

Handling Advice: Avoid repeat freeze-thaw cycles.

Storage: 4 °C, -20 °C

Storage Comment: Long term: -20°C, the use of 50% glycerol is recommended if storing aliquots in -20°C for long term use (up to 1 year)
Short term (less than 1 week): 4°C. Avoid freeze-thaw cycles.

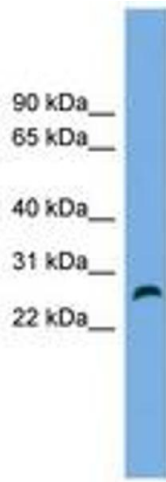


Image 1.