



[Go to Product page](#)

Datasheet for ABIN6744994

## anti-C15orf40 antibody (C-Term)

### 1 Image

#### Overview

Quantity:	100 µL
Target:	C15orf40
Binding Specificity:	C-Term
Reactivity:	Human, Mouse, Cow, Dog, Guinea Pig, Horse, Rat, Pig
Host:	Rabbit
Clonality:	Polyclonal
Conjugate:	This C15orf40 antibody is un-conjugated
Application:	Western Blotting (WB)

#### Product Details

Immunogen:	Synthetic peptide from C-Terminus of human C15orf40 (Q8WUR7, NP_653198). Percent identity by BLAST analysis: Human, Chimpanzee, Gorilla, Gibbon, Monkey, Galago, Mouse, Rat, Dog, Bovine, Horse, Pig, Guinea pig (100%), Marmoset, Elephant, Bat, Opossum, Platypus (92%), Xenopus (85%).  Type of Immunogen: Synthetic peptide
Specificity:	Human C15orf40
Predicted Reactivity:	Percent identity by BLAST analysis: Human, Dog, Pig, Guinea pig (100%) Xenopus (85%).
Purification:	Immunoaffinity purified

## Target Details

---

Target:	C15orf40
Alternative Name:	C15orf40 ( <a href="#">C15orf40 Products</a> )
Background:	Name/Gene ID: C15orf40  Synonyms: C15orf40, UPF0235 protein C15orf40
Gene ID:	123207
NCBI Accession:	<a href="#">NP_653198</a>

## Application Details

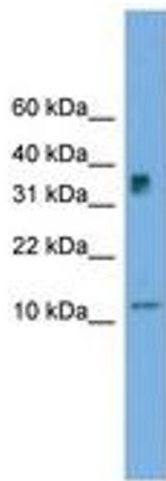
---

Application Notes:	Approved: WB (0.2 - 1 µg/mL)  Usage: Western Blot: Suggested dilution at 1 µg/mL in 5 % skim milk / PBS buffer, and HRP conjugated anti-Rabbit IgG should be diluted in 1: 50,000 - 100,000 as secondary antibody.
Comment:	Target Species of Antibody: Human
Restrictions:	For Research Use only

## Handling

---

Format:	Lyophilized
Reconstitution:	Distilled water
Concentration:	Lot specific
Buffer:	Lyophilized from PBS with 2 % sucrose
Handling Advice:	Avoid repeat freeze-thaw cycles.
Storage:	4 °C,-20 °C
Storage Comment:	Long term: -20°C, the use of 50% glycerol is recommended if storing aliquots in -20°C for long term use (up to 1 year)  Short term (less than 1 week): 4°C. Avoid freeze-thaw cycles.



**Image 1.**