



[Go to Product page](#)

Datasheet for ABIN6744996  
**anti-TMEM42 antibody (N-Term)**

1 Image

Overview

Quantity:	100 µL
Target:	TMEM42
Binding Specificity:	N-Term
Reactivity:	Human, Dog, Rabbit, Monkey
Host:	Rabbit
Clonality:	Polyclonal
Conjugate:	This TMEM42 antibody is un-conjugated
Application:	Western Blotting (WB)

Product Details

Immunogen:	Synthetic peptide from N-Terminus of human TMEM42 (Q5R7Q1, NP_653239). Percent identity by BLAST analysis: Human, Chimpanzee, Gorilla, Orangutan, Monkey, Galago (100%), Panda (91%), Elephant, Rabbit (85%), Guinea pig (84%), Marmoset, Dog (83%).  Type of Immunogen: Synthetic peptide
Specificity:	Human TMEM42
Predicted Reactivity:	Percent identity by BLAST analysis: Rabbit (85%) Dog (83%).
Purification:	Immunoaffinity purified

Target Details

Target:	TMEM42
---------	--------

## Target Details

---

Alternative Name:	TMEM42 ( <a href="#">TMEM42 Products</a> )
Background:	Name/Gene ID: TMEM42  Synonyms: TMEM42, Transmembrane protein 42
Gene ID:	131616
NCBI Accession:	<a href="#">NP_653239</a>
UniProt:	<a href="#">Q69YG0</a>

## Application Details

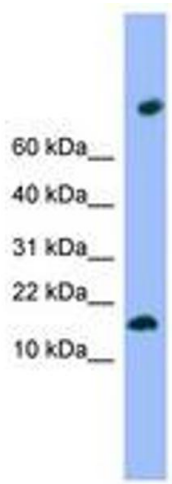
---

Application Notes:	Approved: WB (0.2 - 1 µg/mL)  Usage: Western Blot: Suggested dilution at 1 µg/mL in 5 % skim milk / PBS buffer, and HRP conjugated anti-Rabbit IgG should be diluted in 1: 50,000 - 100,000 as secondary antibody.
Comment:	Target Species of Antibody: Human
Restrictions:	For Research Use only

## Handling

---

Format:	Lyophilized
Reconstitution:	Distilled water
Concentration:	Lot specific
Buffer:	Lyophilized from PBS with 2 % sucrose
Handling Advice:	Avoid repeat freeze-thaw cycles.
Storage:	4 °C,-20 °C
Storage Comment:	Long term: -20°C, the use of 50% glycerol is recommended if storing aliquots in -20°C for long term use (up to 1 year)  Short term (less than 1 week): 4°C. Avoid freeze-thaw cycles.



**Image 1.**