



Datasheet for ABIN6745004  
**anti-OMA1 antibody (AA 359-408)**



[Go to Product page](#)

1 Image

Overview

Quantity:	100 µL
Target:	OMA1
Binding Specificity:	AA 359-408
Reactivity:	Human, Mouse, Rat, Cow, Dog, Guinea Pig, Horse, Pig, Rabbit, Monkey
Host:	Rabbit
Clonality:	Polyclonal
Conjugate:	This OMA1 antibody is un-conjugated
Application:	Western Blotting (WB)

Product Details

Immunogen:	Synthetic peptide located between aa359-408 of human OMA1 (Q96E52, NP_660286). Percent identity by BLAST analysis: Human, Chimpanzee, Gorilla, Gibbon, Monkey, Marmoset (100%), Elephant, Bat, Lizard (92%), Opossum (91%), Mouse, Rat, Panda, Dog, Rabbit, Horse, Pig, Turkey, Zebra finch (85%), Galago, Bovine (84%).  Type of Immunogen: Synthetic peptide
Specificity:	Human OMA1
Predicted Reactivity:	Percent identity by BLAST analysis: Human (100%) Mouse, Rat, Dog, Rabbit, Horse, Pig (85%) Bovine (84%).
Purification:	Immunoaffinity purified

## Target Details

---

Target:	OMA1
Alternative Name:	OMA1 ( <a href="#">OMA1 Products</a> )
Background:	Name/Gene ID: OMA1  Synonyms: OMA1, MPRP-1, MPRP1, YKR087C, ZMPOMA1
Gene ID:	115209
NCBI Accession:	<a href="#">NP_660286</a>
UniProt:	<a href="#">Q96E52</a>

## Application Details

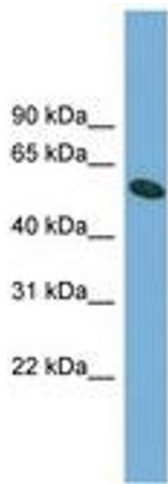
---

Application Notes:	Approved: WB (0.2 - 1 µg/mL)  Usage: Western Blot: Suggested dilution at 1 µg/mL in 5 % skim milk / PBS buffer, and HRP conjugated anti-Rabbit IgG should be diluted in 1: 50,000 - 100,000 as secondary antibody.
Comment:	Target Species of Antibody: Human
Restrictions:	For Research Use only

## Handling

---

Format:	Lyophilized
Reconstitution:	Distilled water
Concentration:	Lot specific
Buffer:	Lyophilized from PBS with 2 % sucrose
Handling Advice:	Avoid repeat freeze-thaw cycles.
Storage:	4 °C, -20 °C
Storage Comment:	Long term: -20°C, the use of 50% glycerol is recommended if storing aliquots in -20°C for long term use (up to 1 year)  Short term (less than 1 week): 4°C. Avoid freeze-thaw cycles.



**Image 1.**