

Datasheet for ABIN6745010
anti-TMC8 antibody (AA 143-192)[Go to Product page](#)

1 Image

Overview

Quantity:	100 µL
Target:	TMC8
Binding Specificity:	AA 143-192
Reactivity:	Human
Host:	Rabbit
Clonality:	Polyclonal
Conjugate:	This TMC8 antibody is un-conjugated
Application:	Western Blotting (WB)

Product Details

Immunogen:	Synthetic peptide located between aa143-192 of human TMC8 (Q8IU68, NP_689681). Percent identity by BLAST analysis: Human (100%), Gorilla, Monkey (92%), Gibbon (85%). Type of Immunogen: Synthetic peptide
Specificity:	Human TMC8 / EVER2
Predicted Reactivity:	Percent identity by BLAST analysis: Human (100%).
Purification:	Immunoaffinity purified

Target Details

Target:	TMC8
Alternative Name:	TMC8 / EVER2 (TMC8 Products)

Target Details

Background: Name/Gene ID: TMC8

Synonyms: TMC8, EVER2, EVIN2, Transmembrane channel-like 8, EV2

Gene ID: 147138

NCBI Accession: [NP_689681](#)

UniProt: [Q8IU68](#)

Application Details

Application Notes: Approved: WB (0.2 - 1 µg/mL)

Usage: Western Blot: Suggested dilution at 1 µg/mL in 5 % skim milk / PBS buffer, and HRP conjugated anti-Rabbit IgG should be diluted in 1: 50,000 - 100,000 as secondary antibody.

Comment: Target Species of Antibody: Human

Restrictions: For Research Use only

Handling

Format: Lyophilized

Reconstitution: Reconstitute with 50 µL sterile ddH₂O.

Concentration: Lot specific

Buffer: Lyophilized from PBS with 2 % sucrose

Handling Advice: Avoid repeat freeze-thaw cycles.

Storage: 4 °C, -20 °C

Storage Comment: Long term: -20°C, the use of 50% glycerol is recommended if storing aliquots in -20°C for long term use (up to 1 year)
Short term (less than 1 week): 4°C. Avoid freeze-thaw cycles.

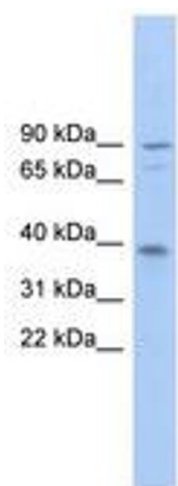


Image 1.