

Datasheet for ABIN6745012
anti-OST alpha antibody (AA 179-228)



[Go to Product page](#)

1 Image

Overview

Quantity:	100 µL
Target:	OST alpha (OSTALPHA)
Binding Specificity:	AA 179-228
Reactivity:	Human, Cow, Horse, Monkey
Host:	Rabbit
Clonality:	Polyclonal
Conjugate:	This OST alpha antibody is un-conjugated
Application:	Western Blotting (WB)

Product Details

Immunogen:	Synthetic peptide located between aa179-228 of human SLC51A (Q86UW1, NP_689885). Percent identity by BLAST analysis: Human, Gorilla, Gibbon, Monkey, Bovine, Horse (100%), Rat, Elephant, Rabbit, Guinea pig (91%), Pig (85%), Mouse (83%). Type of Immunogen: Synthetic peptide
Specificity:	Human OSTALPHA
Predicted Reactivity:	Percent identity by BLAST analysis: Rat (91%) Bovine (85%).
Purification:	Immunoaffinity purified

Target Details

Target:	OST alpha (OSTALPHA)
---------	----------------------

Target Details

Alternative Name:	SLC51A / OSTALPHA (OSTALPHA Products)
Background:	Name/Gene ID: SLC51A Synonyms: SLC51A, OSTA, OSTalpha, OST-alpha
Gene ID:	200931
NCBI Accession:	NP_689885
UniProt:	Q86UW1

Application Details

Application Notes:	Approved: WB (0.2 - 1 µg/mL) Usage: Western Blot: Suggested dilution at 1 µg/mL in 5 % skim milk / PBS buffer, and HRP conjugated anti-Rabbit IgG should be diluted in 1: 50,000 - 100,000 as secondary antibody.
Comment:	Target Species of Antibody: Human
Restrictions:	For Research Use only

Handling

Format:	Lyophilized
Reconstitution:	Distilled water
Concentration:	Lot specific
Buffer:	Lyophilized from PBS with 2 % sucrose
Handling Advice:	Avoid repeat freeze-thaw cycles.
Storage:	4 °C,-20 °C
Storage Comment:	Long term: -20°C, the use of 50% glycerol is recommended if storing aliquots in -20°C for long term use (up to 1 year) Short term (less than 1 week): 4°C. Avoid freeze-thaw cycles.

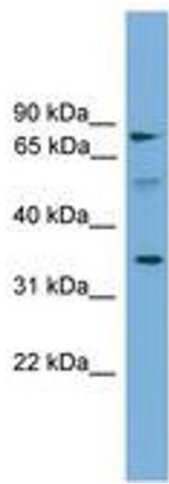


Image 1.