



[Go to Product page](#)

Datasheet for ABIN6745014
anti-TMEM139 antibody (AA 35-84)

1 Image

Overview

Quantity:	100 µL
Target:	TMEM139
Binding Specificity:	AA 35-84
Reactivity:	Human, Cow, Dog
Host:	Rabbit
Clonality:	Polyclonal
Conjugate:	This TMEM139 antibody is un-conjugated
Application:	Western Blotting (WB)

Product Details

Immunogen:	Synthetic peptide located between aa35-84 of human TMEM139 (Q8IV31, NP_699176). Percent identity by BLAST analysis: Human, Chimpanzee, Gibbon (100%), Gorilla, Marmoset (92%), Dog, Bat, Rabbit, Horse, Pig (85%). Type of Immunogen: Synthetic peptide
Specificity:	Human TMEM139
Predicted Reactivity:	Percent identity by BLAST analysis: Dog (85%).
Purification:	Immunoaffinity purified

Target Details

Target:	TMEM139
---------	---------

Target Details

Alternative Name: TMEM139 ([TMEM139 Products](#))

Background: Name/Gene ID: TMEM139

Synonyms: TMEM139, Transmembrane protein 139

Gene ID: 135932

NCBI Accession: [NP_699176](#)

UniProt: [Q8IV31](#)

Application Details

Application Notes: Approved: WB (0.2 - 1 µg/mL)

Usage: Western Blot: Suggested dilution at 1 µg/mL in 5 % skim milk / PBS buffer, and HRP conjugated anti-Rabbit IgG should be diluted in 1: 50,000 - 100,000 as secondary antibody.

Comment: Target Species of Antibody: Human

Restrictions: For Research Use only

Handling

Format: Lyophilized

Reconstitution: Distilled water

Concentration: Lot specific

Buffer: Lyophilized from PBS with 2 % sucrose

Handling Advice: Avoid repeat freeze-thaw cycles.

Storage: 4 °C, -20 °C

Storage Comment: Long term: -20°C, the use of 50% glycerol is recommended if storing aliquots in -20°C for long term use (up to 1 year)

Short term (less than 1 week): 4°C. Avoid freeze-thaw cycles.

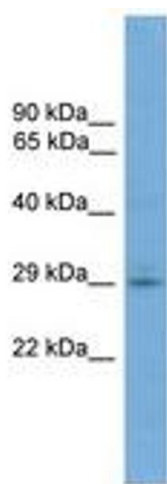


Image 1.