

Datasheet for ABIN6745017
anti-CNTD1 antibody (AA 35-84)[Go to Product page](#)

1 Image

Overview

Quantity:	100 µL
Target:	CNTD1
Binding Specificity:	AA 35-84
Reactivity:	Human, Mouse, Rat, Cow, Dog, Horse, Rabbit, Guinea Pig, Pig, Bat, Hamster, Monkey
Host:	Rabbit
Clonality:	Polyclonal
Conjugate:	This CNTD1 antibody is un-conjugated
Application:	Western Blotting (WB)

Product Details

Immunogen:	Synthetic peptide located between aa35-84 of human CNTD1 (Q8N815, NP_775749). Percent identity by BLAST analysis: Human, Gibbon, Monkey, Marmoset, Mouse, Rat, Hamster, Elephant, Dog, Bovine, Bat, Rabbit, Horse, Pig, Opossum, Guinea pig (100%), Galago (92%). Type of Immunogen: Synthetic peptide
Specificity:	Human CNTD1 / CNTD
Predicted Reactivity:	Percent identity by BLAST analysis: Human, Mouse, Dog, Bovine, Guinea pig (100%).
Purification:	Immunoaffinity purified

Target Details

Target:	CNTD1
---------	-------

Target Details

Alternative Name:	CNTD1 (CNTD1 Products)
Background:	Name/Gene ID: CNTD1
	Synonyms: CNTD1, CNTD
Gene ID:	124817
NCBI Accession:	NP_775749
UniProt:	Q8N815

Application Details

Application Notes:	Approved: WB (0.2 - 1 µg/mL)
	Usage: Western Blot: Suggested dilution at 1 µg/mL in 5 % skim milk / PBS buffer, and HRP conjugated anti-Rabbit IgG should be diluted in 1: 50,000 - 100,000 as secondary antibody.
Comment:	Target Species of Antibody: Human
Restrictions:	For Research Use only

Handling

Format:	Lyophilized
Reconstitution:	Distilled water
Concentration:	Lot specific
Buffer:	Lyophilized from PBS with 2 % sucrose
Handling Advice:	Avoid repeat freeze-thaw cycles.
Storage:	4 °C, -20 °C
Storage Comment:	Long term: -20°C, the use of 50% glycerol is recommended if storing aliquots in -20°C for long term use (up to 1 year)
	Short term (less than 1 week): 4°C. Avoid freeze-thaw cycles.

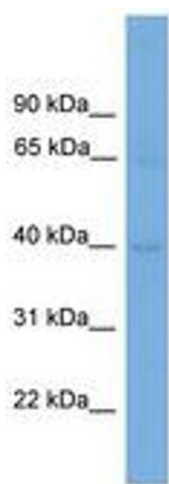


Image 1.