



[Go to Product page](#)

Datasheet for ABIN6745020  
**anti-C8orf45 antibody (AA 395-444)**

1 Image

Overview

Quantity:	100 µL
Target:	C8orf45
Binding Specificity:	AA 395-444
Reactivity:	Human, Cow, Rabbit, Dog, Pig, Monkey
Host:	Rabbit
Clonality:	Polyclonal
Conjugate:	This C8orf45 antibody is un-conjugated
Application:	Western Blotting (WB)

Product Details

Immunogen:	Synthetic peptide located between aa395-444 of human MCMDC2 (Q4G0Z9, NP_775789). Percent identity by BLAST analysis: Human, Chimpanzee, Gorilla, Gibbon, Monkey, Marmoset, Panda, Dog, Bovine, Rabbit, Pig (100%), Galago, Mouse, Rat, Bat, Horse, Guinea pig (92%), Elephant, Lizard (85%).  Type of Immunogen: Synthetic peptide
Specificity:	Human C8orf45
Predicted Reactivity:	Percent identity by BLAST analysis: Guinea pig (92%).
Purification:	Immunoaffinity purified

## Target Details

---

Target:	C8orf45
Alternative Name:	MCMDC2 / C8orf45 ( <a href="#">C8orf45 Products</a> )
Background:	Name/Gene ID: MCMDC2  Synonyms: MCMDC2, C8orf45
Gene ID:	157777
NCBI Accession:	<a href="#">NP_775789</a>
UniProt:	<a href="#">Q4G0Z9</a>

## Application Details

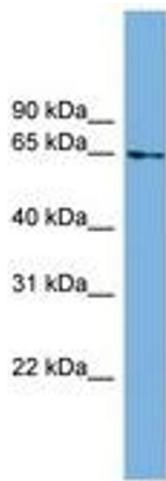
---

Application Notes:	Approved: WB (0.2 - 1 µg/mL)  Usage: Western Blot: Suggested dilution at 1 µg/mL in 5 % skim milk / PBS buffer, and HRP conjugated anti-Rabbit IgG should be diluted in 1: 50,000 - 100,000 as secondary antibody.
Comment:	Target Species of Antibody: Human
Restrictions:	For Research Use only

## Handling

---

Format:	Lyophilized
Reconstitution:	Distilled water
Concentration:	Lot specific
Buffer:	Lyophilized from PBS with 2 % sucrose
Handling Advice:	Avoid repeat freeze-thaw cycles.
Storage:	4 °C, -20 °C
Storage Comment:	Long term: -20°C, the use of 50% glycerol is recommended if storing aliquots in -20°C for long term use (up to 1 year)  Short term (less than 1 week): 4°C. Avoid freeze-thaw cycles.



**Image 1.**