



[Go to Product page](#)

Datasheet for ABIN6745025
anti-CHMP4B antibody (AA 71-120)

1 Image

Overview

Quantity:	100 µL
Target:	CHMP4B
Binding Specificity:	AA 71-120
Reactivity:	Human, Mouse, Rat, Cow, Dog, Guinea Pig, Horse, Rabbit, Zebrafish (Danio rerio), Bat, Chicken, Monkey, Pig, Xenopus laevis
Host:	Rabbit
Clonality:	Polyclonal
Conjugate:	This CHMP4B antibody is un-conjugated
Application:	Western Blotting (WB)

Product Details

Immunogen:	Synthetic peptide located between aa71-120 of human CHMP4B (Q9H444, NP_789782). Percent identity by BLAST analysis: Human, Chimpanzee, Gorilla, Gibbon, Monkey, Galago, Marmoset, Mouse, Rat, Elephant, Dog, Bovine, Bat, Rabbit, Horse, Pig, Opossum, Guinea pig, Turkey, Zebra finch, Chicken, Platypus, Lizard, Xenopus, Zebrafish (100%), Stickleback, Beetle (92%), Hamster, Panda, Drosophila (85%). Type of Immunogen: Synthetic peptide
Specificity:	Human CHMP4B
Predicted Reactivity:	Percent identity by BLAST analysis: Rat, Dog, Bovine, Rabbit, Horse, Pig (100%).
Purification:	Immunoaffinity purified

Target Details

Target:	CHMP4B
Alternative Name:	CHMP4B (CHMP4B Products)
Background:	Name/Gene ID: CHMP4B Synonyms: CHMP4B, C20orf178, Chromatin modifying protein 4B, DJ553F4.4, HVps32-2, HSnf7-2, Shax1, SNF7, VPS32B, Vps32-2, SNF7-2, Chromatin-modifying protein 4b, CTPP3
Gene ID:	128866
NCBI Accession:	NP_789782

Application Details

Application Notes:	Approved: WB (0.2 - 1 µg/mL) Usage: Western Blot: Suggested dilution at 1 µg/mL in 5 % skim milk / PBS buffer, and HRP conjugated anti-Rabbit IgG should be diluted in 1: 50,000 - 100,000 as secondary antibody.
Comment:	Target Species of Antibody: Human
Restrictions:	For Research Use only

Handling

Format:	Lyophilized
Reconstitution:	Distilled water
Concentration:	Lot specific
Buffer:	Lyophilized from PBS with 2 % sucrose
Handling Advice:	Avoid repeat freeze-thaw cycles.
Storage:	4 °C, -20 °C
Storage Comment:	Long term: -20°C, the use of 50% glycerol is recommended if storing aliquots in -20°C for long term use (up to 1 year) Short term (less than 1 week): 4°C. Avoid freeze-thaw cycles.

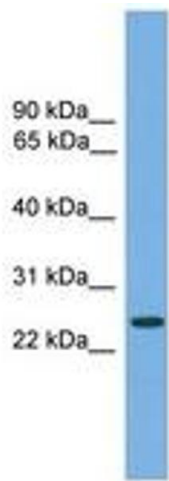


Image 1.