



[Go to Product page](#)

Datasheet for ABIN6745033
anti-LRRC23 antibody (AA 179-228)

1 Image

Overview

Quantity:	100 µL
Target:	LRRC23
Binding Specificity:	AA 179-228
Reactivity:	Human, Rat, Dog
Host:	Rabbit
Clonality:	Polyclonal
Conjugate:	This LRRC23 antibody is un-conjugated
Application:	Western Blotting (WB)

Product Details

Immunogen:	Synthetic peptide located between aa179-228 of human LRRC23 (Q53EV4, NP_964013). Percent identity by BLAST analysis: Human, Chimpanzee, Gorilla, Gibbon, Marmoset, Dog, Platypus (100%), Monkey, Galago, Mouse, Elephant, Bovine, Bat, Rabbit, Pig, Opossum (92%), Hamster, Horse (85%), Rat (78%). Type of Immunogen: Synthetic peptide
Specificity:	Human LRRC23
Predicted Reactivity:	Percent identity by BLAST analysis: Human, Dog (100%) Bovine, Pig (92%).
Purification:	Immunoaffinity purified

Target Details

Target:	LRRC23
Alternative Name:	LRPB7 / LRRC23 (LRRC23 Products)
Background:	Name/Gene ID: LRRC23 Synonyms: LRRC23, B7, Leucine-rich protein B7, LRPB7
Gene ID:	10233
NCBI Accession:	NP_964013
UniProt:	Q53EV4

Application Details

Application Notes:	Approved: WB (0.2 - 1 µg/mL) Usage: Western Blot: Suggested dilution at 1 µg/mL in 5 % skim milk / PBS buffer, and HRP conjugated anti-Rabbit IgG should be diluted in 1: 50,000 - 100,000 as secondary antibody.
Comment:	Target Species of Antibody: Human
Restrictions:	For Research Use only

Handling

Format:	Lyophilized
Reconstitution:	Distilled water
Concentration:	Lot specific
Buffer:	Lyophilized from PBS with 2 % sucrose
Handling Advice:	Avoid repeat freeze-thaw cycles.
Storage:	4 °C, -20 °C
Storage Comment:	Long term: -20°C, the use of 50% glycerol is recommended if storing aliquots in -20°C for long term use (up to 1 year) Short term (less than 1 week): 4°C. Avoid freeze-thaw cycles.

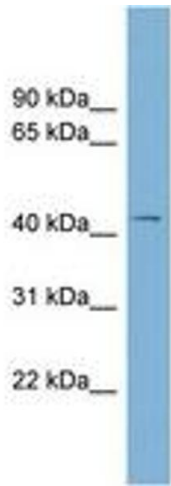


Image 1.