



[Go to Product page](#)

Datasheet for ABIN6745048
anti-FBX031 antibody (AA 395-444)

1 Image

Overview

Quantity:	100 µL
Target:	FBX031
Binding Specificity:	AA 395-444
Reactivity:	Human
Host:	Rabbit
Clonality:	Polyclonal
Conjugate:	This FBX031 antibody is un-conjugated
Application:	Western Blotting (WB)

Product Details

Immunogen:	Synthetic peptide located between aa395-444 of human FBX031 (Q5XUX0, NP_079011). Percent identity by BLAST analysis: Human, Chimpanzee, Gorilla, Gibbon (100%), Marmoset (85%), Monkey (84%). Type of Immunogen: Synthetic peptide
Specificity:	Human FBX031
Predicted Reactivity:	Percent identity by BLAST analysis:
Purification:	Immunoaffinity purified

Target Details

Target:	FBX031
---------	--------

Target Details

Alternative Name:	FBX031 (FBX031 Products)
Background:	Name/Gene ID: FBX031 Family: F-Box Synonyms: FBX031, F-box protein 31, FBX14, FBX014, F-box only protein 31, Fbx31, Pp2386
Gene ID:	79791
NCBI Accession:	NP_079011
UniProt:	Q5XUX0

Application Details

Application Notes:	Approved: WB (0.2 - 1 µg/mL) Usage: Western Blot: Suggested dilution at 1 µg/mL in 5 % skim milk / PBS buffer, and HRP conjugated anti-Rabbit IgG should be diluted in 1: 50,000 - 100,000 as secondary antibody.
Comment:	Target Species of Antibody: Human
Restrictions:	For Research Use only

Handling

Format:	Lyophilized
Reconstitution:	Distilled water
Concentration:	Lot specific
Buffer:	Lyophilized from PBS with 2 % sucrose
Handling Advice:	Avoid repeat freeze-thaw cycles.
Storage:	4 °C, -20 °C
Storage Comment:	Long term: -20°C, the use of 50% glycerol is recommended if storing aliquots in -20°C for long term use (up to 1 year) Short term (less than 1 week): 4°C. Avoid freeze-thaw cycles.

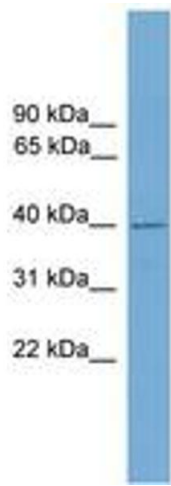


Image 1.