

Datasheet for ABIN6745051
anti-EPHX1 antibody (AA 35-84)[Go to Product page](#)

1 Image

Overview

Quantity:	100 µL
Target:	EPHX1
Binding Specificity:	AA 35-84
Reactivity:	Human, Mouse, Rat, Dog, Rabbit, Goat, Horse, Cow, Zebrafish (Danio rerio), Pig, Bat
Host:	Rabbit
Clonality:	Polyclonal
Conjugate:	This EPHX1 antibody is un-conjugated
Application:	Western Blotting (WB)

Product Details

Immunogen:	Synthetic peptide located between aa35-84 of human EPHX1 (P07099, NP_000111). Percent identity by BLAST analysis: Human, Chimpanzee, Gorilla, Orangutan, Gibbon, Galago, Marmoset, Mouse, Rat, Goat, Bovine, Bat, Rabbit, Horse, Pig (100%), Monkey, Elephant, Panda, Opossum, Guinea pig, Chicken, Stickleback (92%), Dog, Zebra finch, Platypus, Zebrafish (85%), Turkey (83%). Type of Immunogen: Synthetic peptide
Specificity:	Human EPHX1
Predicted Reactivity:	Percent identity by BLAST analysis: Human, Mouse, Bovine, Goat, Horse, Pig (100%) Dog, Zebrafish (85%).
Purification:	Immunoaffinity purified

Target Details

Target:	EPHX1
Alternative Name:	EPHX1 / Epoxide Hydrolase 1 (EPHX1 Products)
Background:	Name/Gene ID: EPHX1 Subfamily: Serine S33 Family: Protease Synonyms: EPHX1, Epoxide hydratase, Epoxide hydrolase, Epoxide hydrolase 1, HYL1, MEH, Microsomal epoxide hydrolase, EPHX, EPOX
Gene ID:	2052
NCBI Accession:	NP_000111
UniProt:	P07099

Application Details

Application Notes:	Approved: WB (0.2 - 1 µg/mL) Usage: Western Blot: Suggested dilution at 1 µg/mL in 5 % skim milk / PBS buffer, and HRP conjugated anti-Rabbit IgG should be diluted in 1: 50,000 - 100,000 as secondary antibody.
Comment:	Target Species of Antibody: Human
Restrictions:	For Research Use only

Handling

Format:	Lyophilized
Reconstitution:	Distilled water
Concentration:	Lot specific
Buffer:	Lyophilized from PBS with 2 % sucrose
Handling Advice:	Avoid repeat freeze-thaw cycles.
Storage:	4 °C, -20 °C
Storage Comment:	Long term: -20°C, the use of 50% glycerol is recommended if storing aliquots in -20°C for long term use (up to 1 year) Short term (less than 1 week): 4°C. Avoid freeze-thaw cycles.

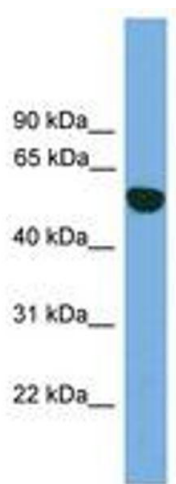


Image 1.