

Datasheet for ABIN6745056
anti-IMPDH2 antibody (N-Term)



[Go to Product page](#)

1 Image

Overview

Quantity:	100 µL
Target:	IMPDH2
Binding Specificity:	N-Term
Reactivity:	Human, Mouse, Rat, Cow, Dog, Guinea Pig, Horse, Rabbit, Zebrafish (Danio rerio), Bat, Hamster, Monkey, Pig, Xenopus laevis
Host:	Rabbit
Clonality:	Polyclonal
Conjugate:	This IMPDH2 antibody is un-conjugated
Application:	Western Blotting (WB)

Product Details

Immunogen:	Synthetic peptide from N-Terminus of human IMPDH2 (P12268, NP_000875). Percent identity by BLAST analysis: Human, Chimpanzee, Gorilla, Gibbon, Monkey, Galago, Marmoset, Mouse, Rat, Hamster, Elephant, Dog, Bovine, Bat, Rabbit, Horse, Pig, Guinea pig, Xenopus (100%), Opossum, Chicken, Lizard (92%), Platypus, Zebrafish (85%). Type of Immunogen: Synthetic peptide
Specificity:	Human IMPDH2
Predicted Reactivity:	Percent identity by BLAST analysis: Human, Mouse, Rat, Dog, Horse, Pig, Guinea pig (100%) Chicken, Xenopus (92%) Zebrafish (84%).
Purification:	Immunoaffinity purified

Target Details

Target:	IMPDH2
Alternative Name:	IMPDH2 (IMPDH2 Products)
Background:	Name/Gene ID: IMPDH2 Synonyms: IMPDH2, IMP dehydrogenase 2, IMP oxireductase 2, IMPD2, IMPDH-II, Dna binding protein rfx2, IMPD 2, IMPDH 2
Gene ID:	3615
NCBI Accession:	NP_000875
UniProt:	P12268
Pathways:	Ribonucleoside Biosynthetic Process , SARS-CoV-2 Protein Interactome

Application Details

Application Notes:	Approved: WB (0.2 - 1 µg/mL) Usage: Western Blot: Suggested dilution at 1 µg/mL in 5 % skim milk / PBS buffer, and HRP conjugated anti-Rabbit IgG should be diluted in 1: 50,000 - 100,000 as secondary antibody.
Comment:	Target Species of Antibody: Human
Restrictions:	For Research Use only

Handling

Format:	Lyophilized
Reconstitution:	Distilled water
Concentration:	Lot specific
Buffer:	Lyophilized from PBS with 2 % sucrose
Handling Advice:	Avoid repeat freeze-thaw cycles.
Storage:	4 °C,-20 °C
Storage Comment:	Long term: -20°C, the use of 50% glycerol is recommended if storing aliquots in -20°C for long term use (up to 1 year) Short term (less than 1 week): 4°C. Avoid freeze-thaw cycles.

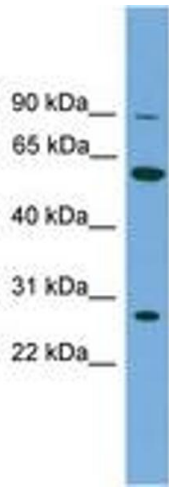


Image 1.