



[Go to Product page](#)

Datasheet for ABIN6745059
anti-CCDC144NL antibody (AA 107-156)

1 Image

Overview

Quantity:	100 µL
Target:	CCDC144NL
Binding Specificity:	AA 107-156
Reactivity:	Human
Host:	Rabbit
Clonality:	Polyclonal
Conjugate:	This CCDC144NL antibody is un-conjugated
Application:	Western Blotting (WB)

Product Details

Immunogen: Synthetic peptide located between aa107-156 of human CCDC144NL (Q6NUI1, NP_001004306). Percent identity by BLAST analysis: Human (100%).

Type of Immunogen: Synthetic peptide

Specificity: Human CCDC144NL

Predicted Reactivity: Percent identity by BLAST analysis:

Purification: Immunoaffinity purified

Target Details

Target: CCDC144NL

Alternative Name: CCDC144NL ([CCDC144NL Products](#))

Target Details

Background: Name/Gene ID: CCDC144NL

Synonyms: CCDC144NL

Gene ID: 339184

NCBI Accession: [NP_001004306](#)

UniProt: [Q6NUI1](#)

Application Details

Application Notes: Approved: WB (0.2 - 1 µg/mL)

Usage: Western Blot: Suggested dilution at 1 µg/mL in 5 % skim milk / PBS buffer, and HRP conjugated anti-Rabbit IgG should be diluted in 1: 50,000 - 100,000 as secondary antibody.

Comment: Target Species of Antibody: Human

Restrictions: For Research Use only

Handling

Format: Lyophilized

Reconstitution: Distilled water

Concentration: Lot specific

Buffer: Lyophilized from PBS with 2 % sucrose

Handling Advice: Avoid repeat freeze-thaw cycles.

Storage: 4 °C, -20 °C

Storage Comment: Long term: -20°C, the use of 50% glycerol is recommended if storing aliquots in -20°C for long term use (up to 1 year)
Short term (less than 1 week): 4°C. Avoid freeze-thaw cycles.

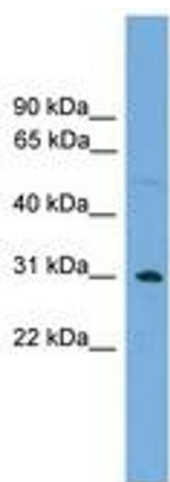


Image 1.