



[Go to Product page](#)

Datasheet for ABIN6745061

## anti-C6orf154 antibody (N-Term)

### 1 Image

#### Overview

Quantity:	100 µL
Target:	C6orf154
Binding Specificity:	N-Term
Reactivity:	Rat, Human, Mouse, Cow, Guinea Pig, Rabbit, Monkey, Pig
Host:	Rabbit
Clonality:	Polyclonal
Conjugate:	This C6orf154 antibody is un-conjugated
Application:	Western Blotting (WB)

#### Product Details

Immunogen:	Synthetic peptide from N-Terminus of human LRRC73 (Q5JTD7, NP_001012992). Percent identity by BLAST analysis: Human, Chimpanzee, Gorilla, Gibbon, Monkey, Galago, Marmoset, Mouse, Rat, Elephant, Panda, Bovine, Rabbit, Pig, Guinea pig (100%), Goat, Opossum, Zebra finch, Chicken, Lizard (92%), Xenopus (84%).  Type of Immunogen: Synthetic peptide
Specificity:	Human C6orf154
Predicted Reactivity:	Percent identity by BLAST analysis:
Purification:	Immunoaffinity purified

## Target Details

---

Target:	C6orf154
Alternative Name:	LRRC73 / C6orf154 ( <a href="#">C6orf154 Products</a> )
Background:	Name/Gene ID: LRRC73  Synonyms: LRRC73, C6orf154, DJ337H4.2
Gene ID:	221424
NCBI Accession:	<a href="#">NP_001012992</a>
UniProt:	<a href="#">Q5JTD7</a>

## Application Details

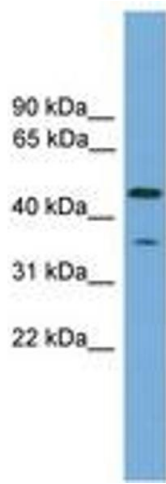
---

Application Notes:	Approved: WB (0.2 - 1 µg/mL)  Usage: Western Blot: Suggested dilution at 1 µg/mL in 5 % skim milk / PBS buffer, and HRP conjugated anti-Rabbit IgG should be diluted in 1: 50,000 - 100,000 as secondary antibody.
Comment:	Target Species of Antibody: Human
Restrictions:	For Research Use only

## Handling

---

Format:	Lyophilized
Reconstitution:	Distilled water
Concentration:	Lot specific
Buffer:	Lyophilized from PBS with 2 % sucrose
Handling Advice:	Avoid repeat freeze-thaw cycles.
Storage:	4 °C, -20 °C
Storage Comment:	Long term: -20°C, the use of 50% glycerol is recommended if storing aliquots in -20°C for long term use (up to 1 year)  Short term (less than 1 week): 4°C. Avoid freeze-thaw cycles.



**Image 1.**